

**Product Name: C3 Rabbit Monoclonal Antibody****Catalog #: AMRe85365**

For research use only.

**Summary**

<b>Description</b>	Recombinant rabbit monoclonal antibody
<b>Host</b>	Rabbit
<b>Application</b>	WB
<b>Reactivity</b>	Human
<b>Conjugation</b>	Unconjugated
<b>Modification</b>	Unmodified
<b>Isotype</b>	IgG
<b>Clonality</b>	Monoclonal
<b>Form</b>	Liquid
<b>Concentration</b>	
<b>Storage</b>	Aliquot and store at -20°C (valid for 12 months). Avoid freeze/thaw cycles.
<b>Shipping</b>	Ice bags
<b>Buffer</b>	Purified antibody in TBS with 0.05% sodium azide, 0.05% protective protein and 50% glycerol.
<b>Purification</b>	Affinity Purification

**Application**

<b>Dilution Ratio</b>	WB 1:500-1:1000
<b>Molecular Weight</b>	Calculated MW: 187 kDa; Observed MW: 120 kDa

**Antigen Information**

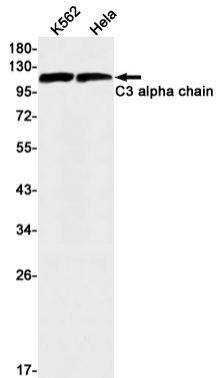
<b>Gene Name</b>	C3
<b>Alternative Names</b>	AHUS5; ARMD9; ASP; Complement C3; Complement factor 3; CPAMD1; HEL S 62p
<b>Gene ID</b>	718.0
<b>SwissProt ID</b>	P01024
<b>Immunogen</b>	A synthetic peptide of human C3

**Background**

Plays a central role in the activation of the complement system. Its processing by C3 convertase is the central reaction in both classical and alternative complement pathways. After activation C3b can bind covalently, via its reactive thioester, to cell surface carbohydrates or immune aggregates.

## Research Area

## Image Data



Western blot analysis of C3 in K562, HeLa lysates using C3 antibody.