

Product Name: BTF3 Rabbit Monoclonal Antibody**Catalog #: AMRe85362**

For research use only.

Summary

Description	Recombinant rabbit monoclonal antibody
Host	Rabbit
Application	WB,IHC,IP
Reactivity	Human,Mouse,Rat
Conjugation	Unconjugated
Modification	Unmodified
Isotype	IgG
Clonality	Monoclonal
Form	Liquid
Concentration	
Storage	Aliquot and store at -20°C (valid for 12 months). Avoid freeze/thaw cycles.
Shipping	Ice bags
Buffer	Purified antibody in TBS with 0.05% sodium azide,0.05%protective protein and 50% glycerol.
Purification	Affinity Purification

Application

Dilution Ratio	WB 1:500-1:1000,IHC 1:50-1:100,IP 1:10-1:20
Molecular Weight	Calculated MW: 22 kDa; Observed MW: 22 kDa

Antigen Information

Gene Name	BTF3
Alternative Names	NACB; BTF3a; BTF3b; BETA-NAC
Gene ID	689.0
SwissProt ID	P20290
Immunogen	Recombinant protein of human BTF3

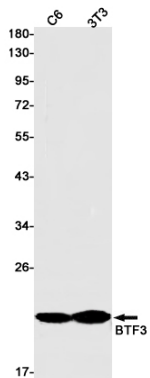
Background

When associated with NACA, prevents inappropriate targeting of non-secretory polypeptides to the endoplasmic reticulum (ER). Binds to nascent polypeptide chains as they emerge from the ribosome and blocks their interaction with the signal recognition particle (SRP), which normally targets nascent secretory peptides to the ER. BTF3 is also a general transcription

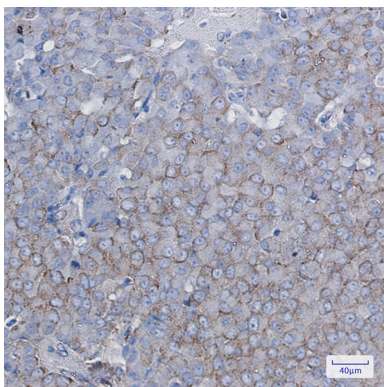
factor that can form a stable complex with RNA polymerase II. Required for the initiation of transcription.

Research Area

Image Data



Western blot analysis of BTF3 in C6, 3T3 lysates using BTF3 antibody.



Immunohistochemistry analysis of paraffin-embedded Human breast cancer using BTF3 antibody. High-pressure and temperature Sodium Citrate pH 6.0 was used for antigen retrieval.