

---

**Product Name: Bora Rabbit Monoclonal Antibody****Catalog #: AMRe85357**

For research use only.

**Summary**

<b>Description</b>	Recombinant rabbit monoclonal antibody
<b>Host</b>	Rabbit
<b>Application</b>	WB,IP
<b>Reactivity</b>	Human,Mouse,Rat
<b>Conjugation</b>	Unconjugated
<b>Modification</b>	Unmodified
<b>Isotype</b>	IgG
<b>Clonality</b>	Monoclonal
<b>Form</b>	Liquid
<b>Concentration</b>	
<b>Storage</b>	Aliquot and store at -20°C (valid for 12 months). Avoid freeze/thaw cycles.
<b>Shipping</b>	Ice bags
<b>Buffer</b>	Purified antibody in TBS with 0.05% sodium azide,0.05%protective protein and 50% glycerol.
<b>Purification</b>	Affinity Purification

**Application**

<b>Dilution Ratio</b>	WB 1:500-1:1000,IP 1:10-1:20
<b>Molecular Weight</b>	Calculated MW: 61 kDa; Observed MW: 61 kDa

**Antigen Information**

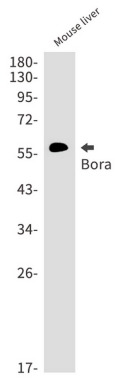
<b>Gene Name</b>	Bora
<b>Alternative Names</b>	C13orf34
<b>Gene ID</b>	79866.0
<b>SwissProt ID</b>	Q6PGQ7
<b>Immunogen</b>	Recombinant protein of human Bora

**Background**

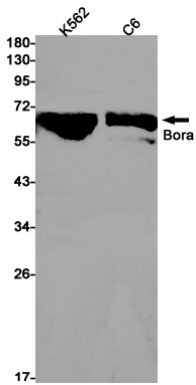
Required for the activation of AURKA at the onset of mitosis.

**Research Area**

## Image Data



Western blot analysis of Bora in mouse liver lysates using Bora antibody.



Western blot analysis of Bora in K562, C6 lysates using Bora antibody.