

---

**Product Name: Bok Rabbit Monoclonal Antibody****Catalog #: AMRe85356**

For research use only.

**Summary**

<b>Description</b>	Recombinant rabbit monoclonal antibody
<b>Host</b>	Rabbit
<b>Application</b>	WB
<b>Reactivity</b>	Human,Rat
<b>Conjugation</b>	Unconjugated
<b>Modification</b>	Unmodified
<b>Isotype</b>	IgG
<b>Clonality</b>	Monoclonal
<b>Form</b>	Liquid
<b>Concentration</b>	
<b>Storage</b>	Aliquot and store at -20°C (valid for 12 months). Avoid freeze/thaw cycles.
<b>Shipping</b>	Ice bags
<b>Buffer</b>	Purified antibody in TBS with 0.05% sodium azide,0.05%protective protein and 50% glycerol.
<b>Purification</b>	Affinity Purification

**Application**

<b>Dilution Ratio</b>	WB 1:500-1:1000
<b>Molecular Weight</b>	Calculated MW: 23 kDa; Observed MW: 23 kDa

**Antigen Information**

<b>Gene Name</b>	Bok
<b>Alternative Names</b>	BOKL; BCL2L9
<b>Gene ID</b>	666.0
<b>SwissProt ID</b>	Q9UMX3
<b>Immunogen</b>	A synthetic peptide of human Bok

**Background**

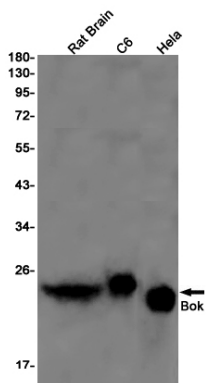
The protein encoded by this gene belongs to the BCL2 family, members of which form homo- or heterodimers, and act as anti- or proapoptotic regulators that are involved in a wide variety of cellular processes. Studies in rat show that this protein has restricted expression in reproductive tissues, interacts strongly with some antiapoptotic BCL2 proteins, not at all with

proapoptotic BCL2 proteins, and induces apoptosis in transfected cells. Thus, this protein represents a proapoptotic member of the BCL2 family.

## Research Area

Apoptosis

## Image Data



Western blot analysis of Bok in rat Brain, C6, HeLa lysates using Bok antibody.