

**Product Name: BMP2 Rabbit Monoclonal Antibody**  
**Catalog #: AMRe85354**



## Summary

<b>Production Name</b>	BMP2 Rabbit Monoclonal Antibody
<b>Description</b>	Rabbit Monoclonal antibody
<b>Host</b>	Rabbit
<b>Application</b>	WB,ICC
<b>Reactivity</b>	Human

## Performance

<b>Conjugation</b>	Unconjugated
<b>Modification</b>	Unmodified
<b>Isotype</b>	IgG
<b>Clonality</b>	Monoclonal
<b>Form</b>	Liquid
<b>Storage</b>	Store at 4°C short term. Aliquot and store at -20°C long term. Avoid freeze/thaw cycles.
<b>Buffer</b>	Purified antibody in TBS with 0.05% sodium azide, 0.05% protective protein and 50% glycerol.
<b>Purification</b>	Affinity Purification

## Immunogen

<b>Gene Name</b>	BMP2
<b>Alternative Names</b>	BMP2; BMP2A; Bone morphogenetic protein 2; BMP-2; Bone morphogenetic protein 2A; BMP-2A
<b>Gene ID</b>	650.0
<b>SwissProt ID</b>	P12643. Recombinant protein of human BMP2

## Application

<b>Dilution Ratio</b>	WB:1:500-1:1000, ICC:1:50-1:200
<b>Molecular Weight</b>	Calculated MW: 45 kDa; Observed MW: 30 kDa

## Background

**Product Name: BMP2 Rabbit Monoclonal Antibody**  
**Catalog #: AMRe85354**

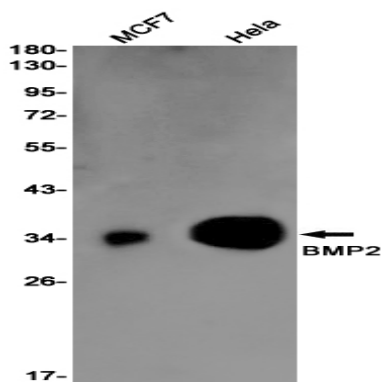


Bone morphogenic proteins (BMPs) are members of the TGF $\beta$  superfamily. BMPs are involved in the induction of cartilage and bone formation. Induces cartilage and bone formation.

**Research Area**

TGF-beta signaling pathway

**Image Data**



Western blot analysis of BMP2 in MCF-7, HeLa lysates using BMP2 antibody.

**Note**

For research use only.