
Product Name: Bim Rabbit Monoclonal Antibody**Catalog #: AMRe85350**

For research use only.

Summary

Description	Recombinant rabbit monoclonal antibody
Host	Rabbit
Application	WB,IHC,ICC,IP
Reactivity	Human,Mouse,Rat
Conjugation	Unconjugated
Modification	Unmodified
Isotype	IgG
Clonality	Monoclonal
Form	Liquid
Concentration	
Storage	Aliquot and store at -20°C (valid for 12 months). Avoid freeze/thaw cycles.
Shipping	Ice bags
Buffer	Purified antibody in TBS with 0.05% sodium azide,0.05%protective protein and 50% glycerol.
Purification	Affinity Purification

Application

Dilution Ratio	WB 1:500-1:1000,IHC 1:50-1:100,ICC 1:50-1:200,IP 1:10-1:20
Molecular Weight	Calculated MW: 22 kDa; Observed MW: 22 kDa

Antigen Information

Gene Name	Bim
Alternative Names	BAM; BIM; BOD; BimL; BimS; BimEL; BIM-beta6; BIM-beta7; BIM-alpha6; BCL2L11
Gene ID	10018.0
SwissProt ID	O43521
Immunogen	A synthetic peptide of human Bim

Background

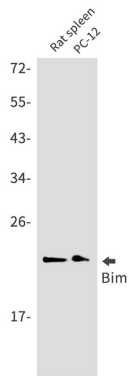
Induces apoptosis and anoikis. Isoform BimL is more potent than isoform BimEL. Isoform Bim-alpha1, isoform Bim-alpha2 and isoform Bim-alpha3 induce apoptosis, although less potent than isoform BimEL, isoform BimL and isoform BimS. Isoform Bim-gamma induces apoptosis. Isoform Bim-alpha3 induces apoptosis possibly through a caspase-mediated pathway. Isoform

BimAC and isoform BimABC lack the ability to induce apoptosis.

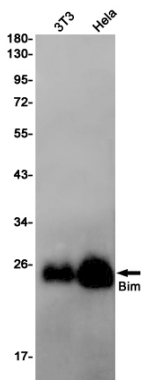
Research Area

Apoptosis, PI3K-Akt signaling pathway

Image Data



Western blot analysis of Bim in rat spleen, PC-12 lysates using Bim antibody.



Western blot analysis of Bim in 3T3, HeLa lysates using Bim antibody.