

**Product Name: beta IV Tubulin Rabbit Monoclonal Antibody****Catalog #: AMRe85349**

For research use only.

**Summary**

<b>Description</b>	Recombinant rabbit monoclonal antibody
<b>Host</b>	Rabbit
<b>Application</b>	WB,IHC,ICC
<b>Reactivity</b>	Human,Mouse,Rat
<b>Conjugation</b>	Unconjugated
<b>Modification</b>	Unmodified
<b>Isotype</b>	IgG
<b>Clonality</b>	Monoclonal
<b>Form</b>	Liquid
<b>Concentration</b>	0.49mg/ml. The concentration of this product may be batch-dependent.
<b>Storage</b>	Aliquot and store at -20°C (valid for 12 months). Avoid freeze/thaw cycles.
<b>Shipping</b>	Ice bags
<b>Buffer</b>	Purified antibody in TBS with 0.05% sodium azide,0.05%protective protein and 50% glycerol.
<b>Purification</b>	Affinity Purification

**Application**

<b>Dilution Ratio</b>	WB 1:500-1:1000,IHC 1:50-1:100,ICC 1:50-1:200
<b>Molecular Weight</b>	Calculated MW: 50 kDa; Observed MW: 50 kDa

**Antigen Information**

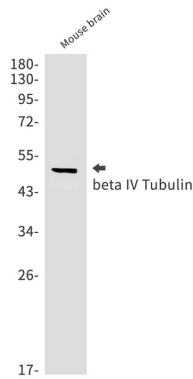
<b>Gene Name</b>	beta IV Tubulin
<b>Alternative Names</b>	DYT4; TUBB4; beta-5
<b>Gene ID</b>	10382.0
<b>SwissProt ID</b>	P04350
<b>Immunogen</b>	A synthetic peptide of human beta IV Tubulin

**Background**

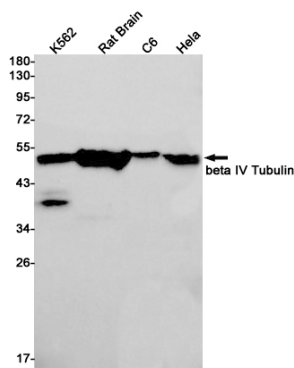
Tubulin is the major constituent of microtubules. It binds two moles of GTP, one at an exchangeable site on the beta chain and one at a non-exchangeable site on the alpha chain.

## Research Area

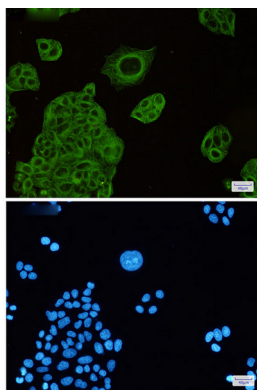
## Image Data



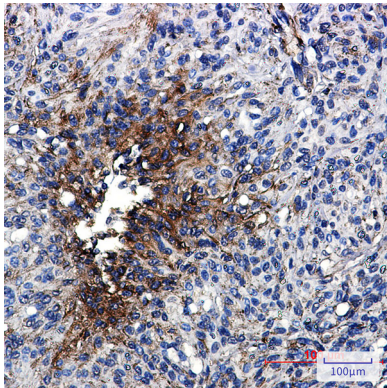
Western blot analysis of beta IV Tubulin in mouse brain lysates using beta IV Tubulin antibody.



Western blot analysis of beta IV Tubulin in K562, rat Brain, C6, HeLa lysates using beta IV Tubulin antibody.



Immunocytochemistry analysis of beta IV Tubulin (green) in HeLa using beta IV Tubulin antibody, and DAPI (blue)



Immunohistochemistry analysis of paraffin-embedded Human brain using beta IV Tubulin antibody. High-pressure and temperature Sodium Citrate pH 6.0 was used for antigen retrieval.