
Product Name: Bcl-XL Rabbit Monoclonal Antibody**Catalog #: AMRe85345**

For research use only.

Summary

Description	Recombinant rabbit monoclonal antibody
Host	Rabbit
Application	WB,IHC,ICC,IP
Reactivity	Human,Mouse,Rat
Conjugation	Unconjugated
Modification	Unmodified
Isotype	IgG
Clonality	Monoclonal
Form	Liquid
Concentration	0.49mg/ml. The concentration of this product may be batch-dependent.
Storage	Aliquot and store at -20°C (valid for 12 months). Avoid freeze/thaw cycles.
Shipping	Ice bags
Buffer	Purified antibody in TBS with 0.05% sodium azide,0.05%protective protein and 50% glycerol.
Purification	Affinity Purification

Application

Dilution Ratio	WB 1:500-1:1000,IHC 1:50-1:100,ICC 1:50-1:200,IP 1:10-1:20
Molecular Weight	Calculated MW: 26 kDa; Observed MW: 30 kDa

Antigen Information

Gene Name	Bcl-XL
Alternative Names	BCL2L1; BCL2L; BCLX; Bcl-2-like protein 1; Bcl2-L-1; Apoptosis regulator Bcl-X
Gene ID	598.0
SwissProt ID	Q07817
Immunogen	Recombinant protein of human Bcl-XL

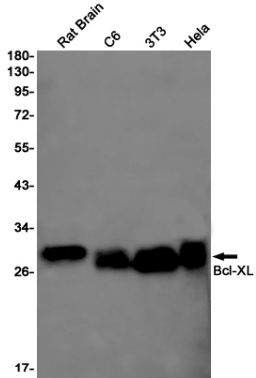
Background

The protein encoded by this gene belongs to the BCL-2 protein family. BCL-2 family members form hetero- or homodimers and act as anti- or pro-apoptotic regulators that are involved in a wide variety of cellular activities.

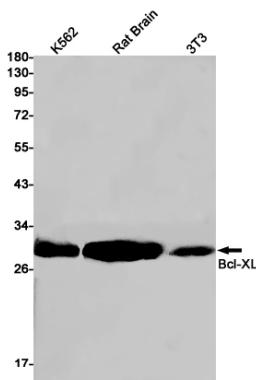
Research Area

Apoptosis,PI3K-Akt signaling pathway

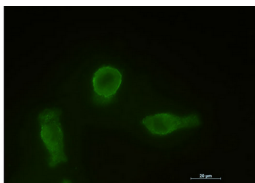
Image Data



Western blot analysis of Bcl-XL in rat Brain, C6, 3T3, HeLa lysates using Bcl-XL antibody.

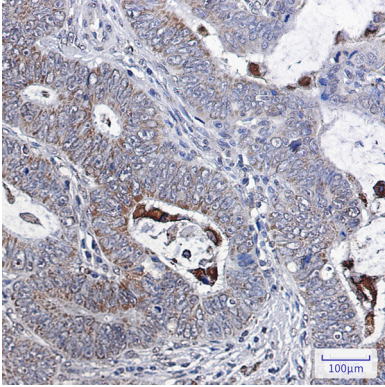


Western blot analysis of Bcl-XL in K562, rat Brain, 3T3 lysates using Bcl-XL antibody



Immunocytochemistry analysis of Bcl-XL (green) in HT-1080 using Bcl-XL antibody, and DAPI (blue).





Immunohistochemistry analysis of paraffin-embedded Human colon cancer using Bcl-XL antibody. High-pressure and temperature Sodium Citrate pH 6.0 was used for antigen retrieval.