

---

**Product Name: BAT5 Rabbit Monoclonal Antibody****Catalog #: AMRe85343**

For research use only.

**Summary**

<b>Description</b>	Recombinant rabbit monoclonal antibody
<b>Host</b>	Rabbit
<b>Application</b>	WB
<b>Reactivity</b>	Human,Rat
<b>Conjugation</b>	Unconjugated
<b>Modification</b>	Unmodified
<b>Isotype</b>	IgG
<b>Clonality</b>	Monoclonal
<b>Form</b>	Liquid
<b>Concentration</b>	
<b>Storage</b>	Aliquot and store at -20°C (valid for 12 months). Avoid freeze/thaw cycles.
<b>Shipping</b>	Ice bags
<b>Buffer</b>	Purified antibody in TBS with 0.05% sodium azide,0.05%protective protein and 50% glycerol.
<b>Purification</b>	Affinity Purification

**Application**

<b>Dilution Ratio</b>	WB 1:500-1:1000
<b>Molecular Weight</b>	Calculated MW: 63 kDa; Observed MW: 55 kDa

**Antigen Information**

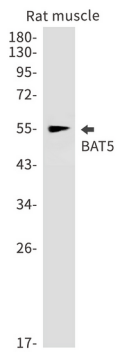
<b>Gene Name</b>	BAT5
<b>Alternative Names</b>	BAT5; NG26; PP199; D6S82E
<b>Gene ID</b>	7920.0
<b>SwissProt ID</b>	O95870
<b>Immunogen</b>	A synthetic peptide of human BAT5

**Background**

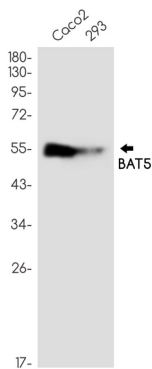
Phosphatidylserine (PS) lipase that mediates the hydrolysis of phosphatidylserine to generate lysophosphatidylserine (LPS) (By similarity).

## Research Area

## Image Data



Western blot analysis of BAT5 in rat muscle lysates using BAT5 antibody.



Western blot analysis of BAT5 in HeLa, Jurkat lysates using BAT5 antibody.