
Product Name: BAT3 Rabbit Monoclonal Antibody**Catalog #: AMRe85342**

For research use only.

Summary

Description	Recombinant rabbit monoclonal antibody
Host	Rabbit
Application	WB,ICC
Reactivity	Human,Mouse,Rat
Conjugation	Unconjugated
Modification	Unmodified
Isotype	IgG
Clonality	Monoclonal
Form	Liquid
Concentration	
Storage	Aliquot and store at -20°C (valid for 12 months). Avoid freeze/thaw cycles.
Shipping	Ice bags
Buffer	Purified antibody in TBS with 0.05% sodium azide,0.05%protective protein and 50% glycerol.
Purification	Affinity Purification

Application

Dilution Ratio	WB 1:500-1:1000,ICC 1:50-1:200
Molecular Weight	Calculated MW: 119 kDa; Observed MW: 150 kDa

Antigen Information

Gene Name	BAT3
Alternative Names	BAG6; BAT 3; Scythe
Gene ID	7917.0
SwissProt ID	P46379
Immunogen	A synthetic peptide of human BAT3

Background

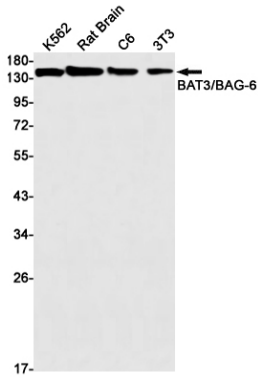
Chaperone that plays a key role in various processes such as apoptosis, insertion of tail-anchored (TA) membrane proteins to the endoplasmic reticulum membrane and regulation of chromatin. Acts in part by regulating stability of proteins and their degradation by the proteasome. Participates in endoplasmic reticulum stress-induced apoptosis via its interaction with

AIFM1/AIF by regulating AIFM1/AIF stability and preventing its degradation.

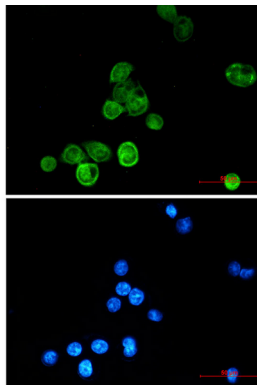
Research Area

Apoptosis

Image Data



Western blot analysis of BAT3/BAG6 in K562, rat Brain, C6, 3T3 lysates using BAT3 antibody.



Immunocytochemistry analysis of BAT3/BAG6 (green) in MCF-7 using BAT3/BAG6 antibody, and DAPI (blue)