

**Product Name: BAG1 Rabbit Monoclonal Antibody****Catalog #: AMRe85337**

For research use only.

**Summary**

<b>Description</b>	Recombinant rabbit monoclonal antibody
<b>Host</b>	Rabbit
<b>Application</b>	WB,IHC,IP
<b>Reactivity</b>	Human
<b>Conjugation</b>	Unconjugated
<b>Modification</b>	Unmodified
<b>Isotype</b>	IgG
<b>Clonality</b>	Monoclonal
<b>Form</b>	Liquid
<b>Concentration</b>	
<b>Storage</b>	Aliquot and store at -20°C (valid for 12 months). Avoid freeze/thaw cycles.
<b>Shipping</b>	Ice bags
<b>Buffer</b>	Purified antibody in TBS with 0.05% sodium azide,0.05%protective protein and 50% glycerol.
<b>Purification</b>	Affinity Purification

**Application**

<b>Dilution Ratio</b>	WB 1:500-1:1000,IHC 1:50-1:100,IP 1:10-1:20
<b>Molecular Weight</b>	Calculated MW: 39 kDa; Observed MW: 52,46,33 kDa

**Antigen Information**

<b>Gene Name</b>	BAG1
<b>Alternative Names</b>	BAG1; HAP; BAG family molecular chaperone regulator 1; BAG-1; Bcl-2-associated athanogene 1
<b>Gene ID</b>	573.0
<b>SwissProt ID</b>	Q99933
<b>Immunogen</b>	A synthetic peptide of human Bag1

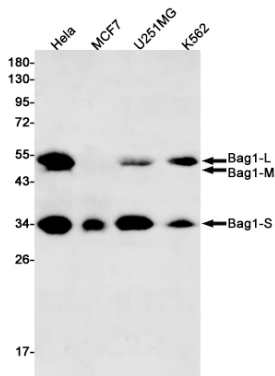
**Background**

Inhibits the chaperone activity of HSP70/HSC70 by promoting substrate release.Inhibits the pro-apoptotic function of PPP1R15A,and has anti-apoptotic activity.Markedly increases the anti-cell death function of BCL2 induced by various stimuli.

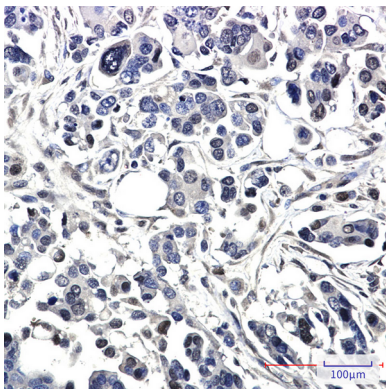
## Research Area

Apoptosis

## Image Data



Western blot analysis of Bag1 in HeLa, MCF-7, U251MG, K562 lysates using BAG1 antibody.



Immunohistochemistry analysis of paraffin-embedded Human Cholangiocarcinoma using Bag1 antibody. High-pressure and temperature Sodium Citrate pH 6.0 was used for antigen retrieval.