

Product Name: ATG4C Rabbit Monoclonal Antibody**Catalog #: AMRe85322**

For research use only.

Summary

Description	Recombinant rabbit monoclonal antibody
Host	Rabbit
Application	WB,IHC
Reactivity	Human
Conjugation	Unconjugated
Modification	Unmodified
Isotype	IgG
Clonality	Monoclonal
Form	Liquid
Concentration	
Storage	Aliquot and store at -20°C (valid for 12 months). Avoid freeze/thaw cycles.
Shipping	Ice bags
Buffer	Purified antibody in TBS with 0.05% sodium azide,0.05%protective protein and 50% glycerol.
Purification	Affinity Purification

Application

Dilution Ratio	WB 1:500-1:1000,IHC 1:50-1:100
Molecular Weight	Calculated MW: 52 kDa; Observed MW: 52 kDa

Antigen Information

Gene Name	ATG4C ATG4C; APG4C; AUTL1; AUTL3; Cysteine protease ATG4C; AUT-like 3 cysteine
Alternative Names	endopeptidase; Autophagin-3; Autophagy-related cysteine endopeptidase 3; Autophagy-related protein 4 homolog C
Gene ID	84938.0
SwissProt ID	Q96DT6
Immunogen	Recombinant protein of human ATG4C

Background

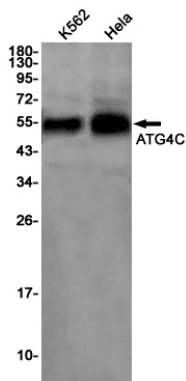
Cysteine protease required for autophagy, which cleaves the C-terminal part of either MAP1LC3, GABARAPL2 or GABARAP,

allowing the liberation of form I. A subpopulation of form I is subsequently converted to a smaller form (form II). Form II, with a revealed C-terminal glycine, is considered to be the phosphatidylethanolamine (PE)-conjugated form, and has the capacity for the binding to autophagosomes.

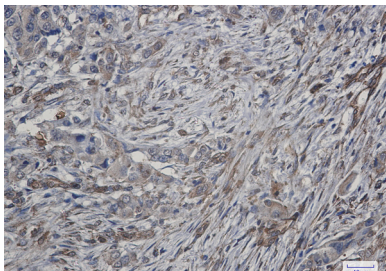
Research Area

Autophagy

Image Data



Western blot analysis of ATG4C in K562, Hela lysates using ATG4C antibody.



Immunohistochemistry analysis of paraffin-embedded Human lung cancer using ATG4C antibody. High-pressure and temperature Sodium Citrate pH 6.0 was used for antigen retrieval.