
Product Name: ATG16L1 Rabbit Monoclonal Antibody**Catalog #: AMRe85319**

For research use only.

Summary

Description	Recombinant rabbit monoclonal antibody
Host	Rabbit
Application	WB
Reactivity	Human,Mouse,Rat
Conjugation	Unconjugated
Modification	Unmodified
Isotype	IgG
Clonality	Monoclonal
Form	Liquid
Concentration	
Storage	Aliquot and store at -20°C (valid for 12 months). Avoid freeze/thaw cycles.
Shipping	Ice bags
Buffer	Purified antibody in TBS with 0.05% sodium azide,0.05%protective protein and 50% glycerol.
Purification	Affinity Purification

Application

Dilution Ratio	WB 1:500-1:1000
Molecular Weight	Calculated MW: 68 kDa; Observed MW: 68 kDa

Antigen Information

Gene Name	ATG16L1
Alternative Names	ATG16L1; APG16L; Autophagy-related protein 16-1; APG16-like 1
Gene ID	55054.0
SwissProt ID	Q676U5
Immunogen	Recombinant protein of human ATG16L1

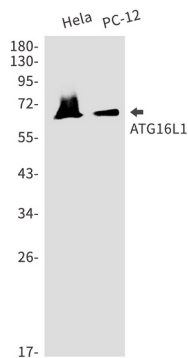
Background

Plays an essential role in autophagy: interacts with ATG12-ATG5 to mediate the conjugation of phosphatidylethanolamine (PE) to LC3 (MAP1LC3A, MAP1LC3B or MAP1LC3C), to produce a membrane-bound activated form of LC3 named LC3-II. Thereby, controls the elongation of the nascent autophagosomal membrane.

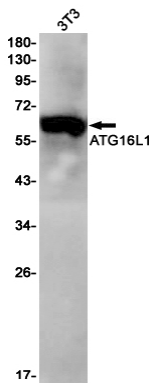
Research Area

Autophagy

Image Data



Western blot analysis of ATG16L1 in HeLa, PC-12 lysates using ATG16L1 antibody.



Western blot analysis of ATG16L1 in 3T3 lysates using ATG16L1 antibody.