
Product Name: AS160 Rabbit Monoclonal Antibody**Catalog #: AMRe85312**

For research use only.

Summary

Description	Recombinant rabbit monoclonal antibody
Host	Rabbit
Application	WB,IP
Reactivity	Human
Conjugation	Unconjugated
Modification	Unmodified
Isotype	IgG
Clonality	Monoclonal
Form	Liquid
Concentration	
Storage	Aliquot and store at -20°C (valid for 12 months). Avoid freeze/thaw cycles.
Shipping	Ice bags
Buffer	Purified antibody in TBS with 0.05% sodium azide,0.05%protective protein and 50% glycerol.
Purification	Affinity Purification

Application

Dilution Ratio	WB 1:500-1:1000,IP 1:10-1:20
Molecular Weight	Calculated MW: 147 kDa; Observed MW: 160 kDa

Antigen Information

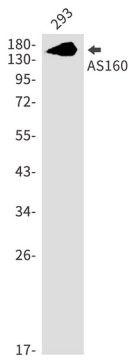
Gene Name	AS160
Alternative Names	AS160; NIDDM5
Gene ID	9882.0
SwissProt ID	O60343
Immunogen	Recombinant protein of human AS160

Background

May act as a GTPase-activating protein for RAB2A, RAB8A, RAB10 and RAB14. Isoform 2 promotes insulin-induced glucose transporter SLC2A4/GLUT4 translocation at the plasma membrane, thus increasing glucose uptake.

Research Area

Image Data



Western blot analysis of AS160 in 293 lysates using AS160 antibody.