

Product Name: ERAP1 Rabbit Monoclonal Antibody**Catalog #: AMRe85310**

For research use only.

Summary

Description	Recombinant rabbit monoclonal antibody
Host	Rabbit
Application	WB,IHC
Reactivity	Human,Rat
Conjugation	Unconjugated
Modification	Unmodified
Isotype	IgG
Clonality	Monoclonal
Form	Liquid
Concentration	
Storage	Aliquot and store at -20°C (valid for 12 months). Avoid freeze/thaw cycles.
Shipping	Ice bags
Buffer	Purified antibody in TBS with 0.05% sodium azide,0.05%protective protein and 50% glycerol.
Purification	Affinity Purification

Application

Dilution Ratio	WB 1:500-1:1000,IHC 1:50-1:100
Molecular Weight	Calculated MW: 107 kDa; Observed MW: 107 kDa

Antigen Information

Gene Name	ERAP1 ERAP1; APPILS; ARTS1; KIAA0525; Endoplasmic reticulum aminopeptidase 1; ARTS-1;
Alternative Names	Adipocyte-derived leucine aminopeptidase; A-LAP; Aminopeptidase PILS; Puromycin-insensitive leucyl-specific aminopeptidase; PILS-AP; Type 1 tumor necrosis facto
Gene ID	51752.0
SwissProt ID	Q9NZ08
Immunogen	A synthetic peptide of human ARTS1

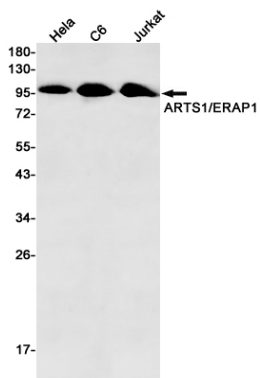
Background

Aminopeptidase that plays a central role in peptide trimming, a step required for the generation of most HLA class I-binding

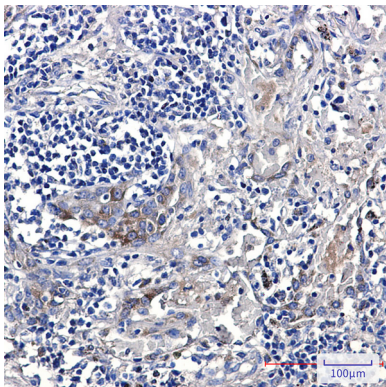
peptides. Peptide trimming is essential to customize longer precursor peptides to fit them to the correct length required for presentation on MHC class I molecules. Strongly prefers substrates 9-16 residues long.

Research Area

Image Data



Western blot analysis of ARTS1/ERAP1 in HeLa, C6, Jurkat lysates using ERAP1 antibody.



Immunohistochemistry analysis of paraffin-embedded Human lung cancer using ARTS1 antibody. High-pressure and temperature Sodium Citrate pH 6.0 was used for antigen retrieval.