
Product Name: ARFGEF2 Rabbit Monoclonal Antibody**Catalog #: AMRe85303**

For research use only.

Summary

Description	Recombinant rabbit monoclonal antibody
Host	Rabbit
Application	WB
Reactivity	Human,Mouse,Rat
Conjugation	Unconjugated
Modification	Unmodified
Isotype	IgG
Clonality	Monoclonal
Form	Liquid
Concentration	
Storage	Aliquot and store at -20°C (valid for 12 months). Avoid freeze/thaw cycles.
Shipping	Ice bags
Buffer	Purified antibody in TBS with 0.05% sodium azide,0.05%protective protein and 50% glycerol.
Purification	Affinity Purification

Application

Dilution Ratio	WB 1:500-1:1000
Molecular Weight	Calculated MW: 202 kDa; Observed MW: 202 kDa

Antigen Information

Gene Name	ARFGEF2
Alternative Names	BIG2; PVNH2; dJ1164I10.1
Gene ID	10564.0
SwissProt ID	Q9Y6D5
Immunogen	A synthetic peptide of human ARFGEF2

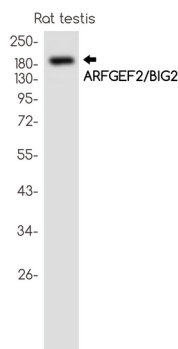
Background

Promotes guanine-nucleotide exchange on ARF1 and ARF3 and to a lower extent on ARF5 and ARF6. Promotes the activation of ARF1/ARF5/ARF6 through replacement of GDP with GTP. Involved in the regulation of Golgi vesicular transport. Required for the integrity of the endosomal compartment. Involved in trafficking from the trans-Golgi network (TGN) to endosomes and is

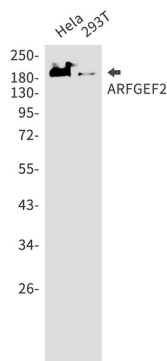
required for membrane association of the AP-1 complex and GGA1. Seems to be involved in recycling of the transferrin receptor from recycling endosomes to the plasma membrane. Probably is involved in the exit of GABA(A) receptors from the endoplasmic reticulum. Involved in constitutive release of tumor necrosis factor receptor 1 via exosome-like vesicles; the function seems to involve PKA and specifically PRKAR2B. Proposed to act as A kinase-anchoring protein (AKAP) and may mediate crosstalk between Arf and PKA pathways.

Research Area

Image Data



Western blot analysis of ARFGEF2/BIG2 in rat testis lysates using ARFGEF2 antibody.



Western blot analysis of ARFGEF2 in HeLa, 293T lysates using ARFGEF2 antibody.