
Product Name: AP3M1 Rabbit Monoclonal Antibody**Catalog #: AMRe85293**

For research use only.

Summary

Description	Recombinant rabbit monoclonal antibody
Host	Rabbit
Application	WB
Reactivity	Human,Mouse,Rat
Conjugation	Unconjugated
Modification	Unmodified
Isotype	IgG
Clonality	Monoclonal
Form	Liquid
Concentration	
Storage	Aliquot and store at -20°C (valid for 12 months). Avoid freeze/thaw cycles.
Shipping	Ice bags
Buffer	Purified antibody in TBS with 0.05% sodium azide,0.05%protective protein and 50% glycerol.
Purification	Affinity Purification

Application

Dilution Ratio	WB 1:500-1:1000
Molecular Weight	Calculated MW: 47 kDa; Observed MW: 47 kDa

Antigen Information

Gene Name	AP3M1
Alternative Names	AP-3 adaptor complex mu3A subunit; Adaptor-related protein complex 3 subunit mu-1; Mu-adaptin 3A; Mu3A-adaptin
Gene ID	26985.0
SwissProt ID	Q9Y2T2
Immunogen	A synthetic peptide of human AP3M1

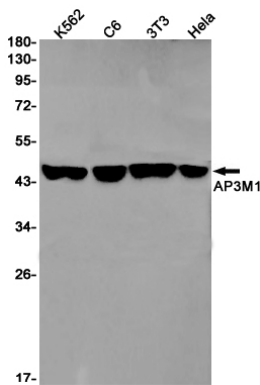
Background

Part of the AP-3 complex, an adaptor-related complex which is not clathrin-associated. The complex is associated with the Golgi region as well as more peripheral structures. It facilitates the budding of vesicles from the Golgi membrane and may be

directly involved in trafficking to lysosomes. In concert with the BLOC-1 complex, AP-3 is required to target cargos into vesicles assembled at cell bodies for delivery into neurites and nerve terminals.

Research Area

Image Data



Western blot analysis of AP3M1 in K562, C6, 3T3, HeLa lysates using AP3M1 antibody.