

---

**Product Name: AP2 alpha Rabbit Monoclonal Antibody****Catalog #: AMRe85291**

For research use only.

**Summary**

<b>Description</b>	Recombinant rabbit monoclonal antibody
<b>Host</b>	Rabbit
<b>Application</b>	WB,IP
<b>Reactivity</b>	Rat
<b>Conjugation</b>	Unconjugated
<b>Modification</b>	Unmodified
<b>Isotype</b>	IgG
<b>Clonality</b>	Monoclonal
<b>Form</b>	Liquid
<b>Concentration</b>	
<b>Storage</b>	Aliquot and store at -20°C (valid for 12 months). Avoid freeze/thaw cycles.
<b>Shipping</b>	Ice bags
<b>Buffer</b>	Purified antibody in TBS with 0.05% sodium azide,0.05%protective protein and 50% glycerol.
<b>Purification</b>	Affinity Purification

**Application**

<b>Dilution Ratio</b>	WB 1:500-1:1000,IP 1:10-1:20
<b>Molecular Weight</b>	Calculated MW: 48 kDa; Observed MW: 48 kDa

**Antigen Information**

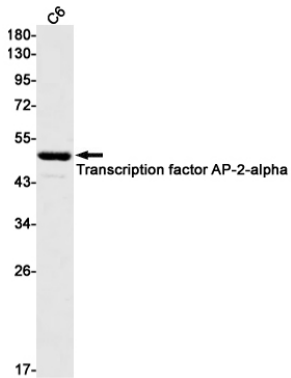
<b>Gene Name</b>	AP2 alpha
<b>Alternative Names</b>	AP-2; BOFS; AP2TF; TFAP2; AP-2alpha
<b>Gene ID</b>	7020.0
<b>SwissProt ID</b>	P05549
<b>Immunogen</b>	A synthetic peptide of human AP2 alpha

**Background**

Sequence-specific DNA-binding protein that interacts with inducible viral and cellular enhancer elements to regulate transcription of selected genes. AP-2 factors bind to the consensus sequence 5'-GCCNNNGGC-3' and activate genes involved in a large spectrum of important biological functions including proper eye, face, body wall, limb and neural tube development.

## Research Area

## Image Data



Western blot analysis of AP2alpha in C6 lysates using AP2 alpha antibody.