

---

**Product Name: Angiotensin Converting Enzyme 1 Rabbit Monoclonal Antibody****Catalog #: AMRe85285**

For research use only.

**Summary**

<b>Description</b>	Recombinant rabbit monoclonal antibody
<b>Host</b>	Rabbit
<b>Application</b>	WB,IHC
<b>Reactivity</b>	Mouse,Rat
<b>Conjugation</b>	Unconjugated
<b>Modification</b>	Unmodified
<b>Isotype</b>	IgG
<b>Clonality</b>	Monoclonal
<b>Form</b>	Liquid
<b>Concentration</b>	
<b>Storage</b>	Aliquot and store at -20°C (valid for 12 months). Avoid freeze/thaw cycles.
<b>Shipping</b>	Ice bags
<b>Buffer</b>	Purified antibody in TBS with 0.05% sodium azide,0.05%protective protein and 50% glycerol.
<b>Purification</b>	Affinity Purification

**Application**

<b>Dilution Ratio</b>	WB 1:500-1:1000,IHC 1:50-1:100
<b>Molecular Weight</b>	Calculated MW: 151 kDa; Observed MW: 180 kDa

**Antigen Information**

<b>Gene Name</b>	Angiotensin Converting Enzyme 1
<b>Alternative Names</b>	ACE; Dipeptidyl carboxypeptidase I; Kininase II
<b>Gene ID</b>	11421.0
<b>SwissProt ID</b>	P09470
<b>Immunogen</b>	Recombinant protein of mouse Angiotensin Converting Enzyme 1

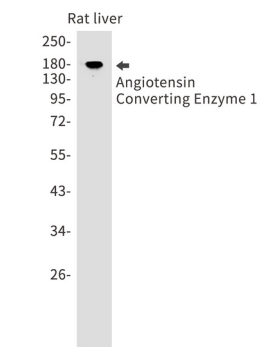
**Background**

Converts angiotensin I to angiotensin II by release of the terminal His-Leu, this results in an increase of the vasoconstrictor activity of angiotensin. Also able to inactivate bradykinin, a potent vasodilator. Has also a glycosidase activity which releases GPI-anchored proteins from the membrane by cleaving the mannose linkage in the GPI moiety. This GPlase activity seems to be

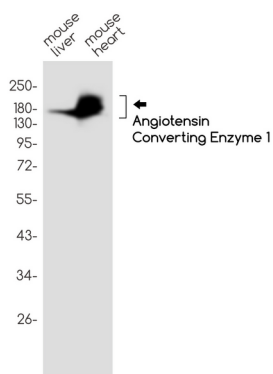
crucial for the egg-binding ability of the sperm.

## Research Area

## Image Data



Western blot analysis of Angiotensin Converting Enzyme 1 in rat liver lysates using Angiotensin Converting Enzyme 1 antibody.



Western blot analysis of Angiotensin Converting Enzyme 1 in mouse liver, mouse heart lysates using Angiotensin Converting Enzyme 1 antibody.