
Product Name: Aly Rabbit Monoclonal Antibody**Catalog #: AMRe85283**

For research use only.

Summary

Description	Recombinant rabbit monoclonal antibody
Host	Rabbit
Application	WB,IHC,ICC,IP
Reactivity	Human,Mouse,Rat
Conjugation	Unconjugated
Modification	Unmodified
Isotype	IgG
Clonality	Monoclonal
Form	Liquid
Concentration	
Storage	Aliquot and store at -20°C (valid for 12 months). Avoid freeze/thaw cycles.
Shipping	Ice bags
Buffer	Purified antibody in TBS with 0.05% sodium azide,0.05%protective protein and 50% glycerol.
Purification	Affinity Purification

Application

Dilution Ratio	WB 1:500-1:1000,IHC 1:50-1:100,ICC 1:50-1:200,IP 1:10-1:20
Molecular Weight	Calculated MW: 27 kDa; Observed MW: 27 kDa

Antigen Information

Gene Name	Aly
Alternative Names	ALYREF; ALY; BEF; THOC4; THO complex subunit 4; Tho4; Ally of AML-1 and LEF-1; Aly/REF export factor; Transcriptional coactivator Aly/REF; bZIP-enhancing factor BEF
Gene ID	10189.0
SwissProt ID	Q86V81
Immunogen	A synthetic peptide of human Aly

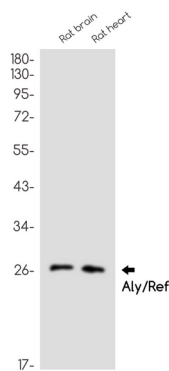
Background

Component of the THO subcomplex of the TREX complex. The TREX complex specifically associates with spliced mRNA and not with unspliced pre-mRNA. It is recruited to spliced mRNAs by a transcription-independent mechanism. Binds to mRNA

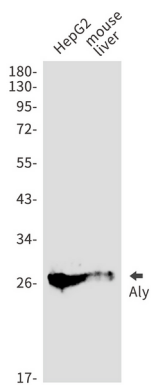
upstream of the exon-junction complex (EJC) and is recruited in a splicing- and cap-dependent manner to a region near the 5' end of the mRNA where it functions in mRNA export.

Research Area

Image Data



Western blot analysis of Aly/Ref in rat brain, rat heart lysates using Aly antibody.



Western blot analysis of Aly/Ref in HepG2, mouse liver lysates using Aly/Ref antibody.