

**Product Name: alpha Tubulin Rabbit Monoclonal Antibody**  
**Catalog #: AMRe85279**

---

## Summary

<b>Production Name</b>	alpha Tubulin Rabbit Monoclonal Antibody Antibody
<b>Description</b>	Rabbit Monoclonal antibody
<b>Host</b>	Rabbit
<b>Application</b>	WB,IP,IHC,ICC
<b>Reactivity</b>	Human,Mouse,Rat,Hamster

## Performance

<b>Conjugation</b>	Unconjugated
<b>Modification</b>	Unmodified
<b>Isotype</b>	IgG
<b>Clonality</b>	Monoclonal
<b>Form</b>	Liquid
<b>Storage</b>	Store at 4°C short term. Aliquot and store at -20°C long term. Avoid freeze/thaw cycles.
<b>Buffer</b>	Purified antibody in TBS with 0.05% sodium azide,0.05%BSA and 50% glycerol.
<b>Purification</b>	Affinity Purification

## Immunogen

<b>Gene Name</b>	alpha Tubulin
<b>Alternative Names</b>	ALS22; TUBA1; H2-ALPHA
<b>Gene ID</b>	7277.0
<b>SwissProt ID</b>	P68366.A synthetic peptide of human alpha Tubulin

## Application

<b>Dilution Ratio</b>	WB:1:500-1:1000,IP:1:10-1:20,IHC:1:50-1:100,ICC:1:50-1:200
<b>Molecular Weight</b>	Calculated MW: 50 kDa; Observed MW: 50 kDa

## Background

---

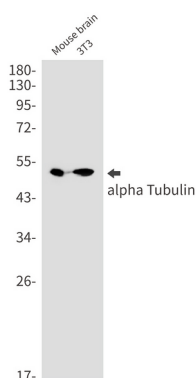
**Product Name: alpha Tubulin Rabbit Monoclonal Antibody**  
**Catalog #: AMRe85279**



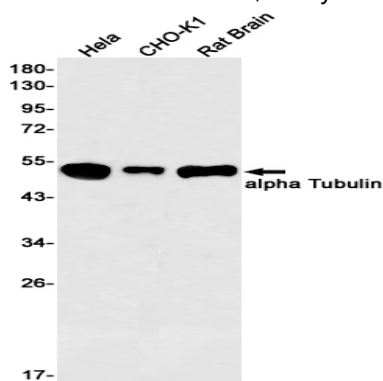
TUBA1A Tubulin is the major constituent of microtubules. It binds two moles of GTP, one at an exchangeable site on the beta chain and one at a non-exchangeable site on the alpha-chain.

## Research Area

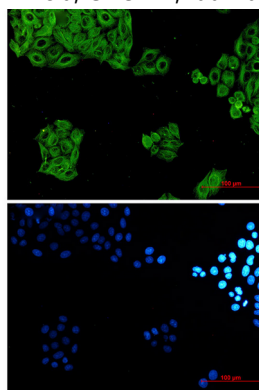
## Image Data



Western blot analysis of alpha Tubulin in mouse brain, 3T3 lysates using alpha Tubulin antibody.



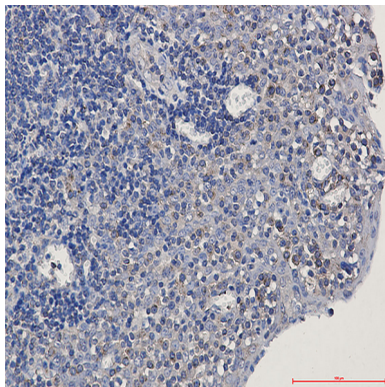
Western blot analysis of alpha Tubulin in HeLa, CHO-K1, rat Brain lysates using alpha Tubulin antibody.



Immunocytochemistry analysis of alpha Tubulin (green) in HeLa cells using alpha Tubulin antibody and DAPI (blue).

**Product Name: alpha Tubulin Rabbit Monoclonal  
Antibody Antibody  
Catalog #: AMRe85279**

---



Immunohistochemistry analysis of paraffin-embedded Human tonsil using alpha Tubulin antibody. High-pressure and temperature Sodium Citrate pH 6.0 was used for antigen retrieval.

### **Note**

For research use only.