
Product Name: alpha Sarcoglycan Rabbit Monoclonal Antibody**Catalog #: AMRe85278**

For research use only.

Summary

Description	Recombinant rabbit monoclonal antibody
Host	Rabbit
Application	WB,IHC,IP
Reactivity	Human,Mouse,Rat
Conjugation	Unconjugated
Modification	Unmodified
Isotype	IgG
Clonality	Monoclonal
Form	Liquid
Concentration	
Storage	Aliquot and store at -20°C (valid for 12 months). Avoid freeze/thaw cycles.
Shipping	Ice bags
Buffer	Purified antibody in TBS with 0.05% sodium azide,0.05%protective protein and 50% glycerol.
Purification	Affinity Purification

Application

Dilution Ratio	WB 1:500-1:1000,IHC 1:50-1:100,IP 1:10-1:20
Molecular Weight	Calculated MW: 43 kDa; Observed MW: 50 kDa

Antigen Information

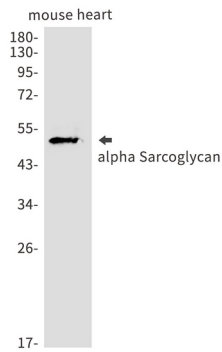
Gene Name	alpha Sarcoglycan
Alternative Names	SGCA; ADL; DAG2; Alpha-sarcoglycan; Alpha-SG; 50 kDa dystrophin-associated glycoprotein; 50DAG; Adhalin; Dystroglycan-2
Gene ID	6442.0
SwissProt ID	Q16586
Immunogen	A synthetic peptide of human alpha Sarcoglycan

Background

Component of the sarcoglycan complex, a subcomplex of the dystrophin-glycoprotein complex which forms a link between the F-actin cytoskeleton and the extracellular matrix.

Research Area

Image Data



Western blot analysis of alpha Sarcoglycan in mouse heart lysates using alpha Sarcoglycan antibody.