

---

**Product Name: 14-3-3 beta/alpha Rabbit Monoclonal Antibody****Catalog #: AMRe85242**

For research use only.

**Summary**

<b>Description</b>	Recombinant rabbit monoclonal antibody
<b>Host</b>	Rabbit
<b>Application</b>	WB,IHC
<b>Reactivity</b>	Human,Mouse,Rat
<b>Conjugation</b>	Unconjugated
<b>Modification</b>	Unmodified
<b>Isotype</b>	IgG
<b>Clonality</b>	Monoclonal
<b>Form</b>	Liquid
<b>Concentration</b>	
<b>Storage</b>	Aliquot and store at -20°C (valid for 12 months). Avoid freeze/thaw cycles.
<b>Shipping</b>	Ice bags
<b>Buffer</b>	Purified antibody in TBS with 0.05% sodium azide,0.05%protective protein and 50% glycerol.
<b>Purification</b>	Affinity Purification

**Application**

<b>Dilution Ratio</b>	WB 1:500-1:1000,IHC 1:50-1:100
<b>Molecular Weight</b>	Calculated MW: 28 kDa; Observed MW: 28 kDa

**Antigen Information**

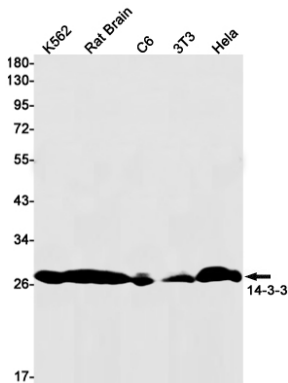
<b>Gene Name</b>	14-3-3 protein beta/alpha
<b>Alternative Names</b>	YWHAB; 14-3-3 protein beta/alpha; Protein 1054; Protein kinase C inhibitor protein 1; KCIP-1
<b>Gene ID</b>	7529.0
<b>SwissProt ID</b>	P31946
<b>Immunogen</b>	A synthetic peptide of human 14-3-3

**Background**

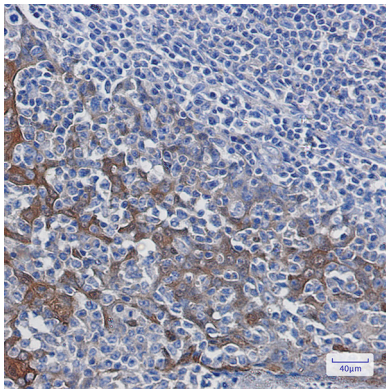
Adapter protein implicated in the regulation of a large spectrum of both general and specialized signaling pathways. Binds to a large number of partners, usually by recognition of a phosphoserine or phosphothreonine motif. Binding generally results in the modulation of the activity of the binding partner. Negative regulator of osteogenesis.

## Research Area

## Image Data



Western blot analysis of 41701 in K562, rat Brain, C6, 3T3, HeLa lysates using 14-3-3 antibody.



Immunohistochemistry analysis of paraffin-embedded Human tonsil using 14-3-3 antibody. High-pressure and temperature Sodium Citrate pH 6.0 was used for antigen retrieval.