

Product Name: ATF2 Rabbit Monoclonal Antibody
Catalog #: AMRe85238



Summary

Production Name	ATF2 Rabbit Monoclonal Antibody
Description	Rabbit Monoclonal antibody
Host	Rabbit
Application	WB,IP,ICC
Reactivity	Human

Performance

Conjugation	Unconjugated
Modification	Unmodified
Isotype	IgG
Clonality	Monoclonal
Form	Liquid
Storage	Store at 4°C short term. Aliquot and store at -20°C long term. Avoid freeze/thaw cycles.
Buffer	Purified antibody in TBS with 0.05% sodium azide, 0.05% protective protein and 50% glycerol.
Purification	Affinity Purification

Immunogen

Gene Name	ATF2
Alternative Names	ATF2; CREB2; CREBP1; Cyclic AMP-dependent transcription factor ATF-2; cAMP-dependent transcription factor ATF-2; Activating transcription factor 2; Cyclic AMP-responsive element-binding protein 2; CREB-2; cAMP-responsive element-binding protein
Gene ID	1386.0
SwissProt ID	P15336.A synthetic peptide of human ATF2

Application

Dilution Ratio	WB:1:500-1:1000,IP:1:10-1:20,ICC:1:50-1:200
Molecular Weight	Calculated MW: 55 kDa; Observed MW: 70 kDa

Product Name: ATF2 Rabbit Monoclonal Antibody
Catalog #: AMRe85238



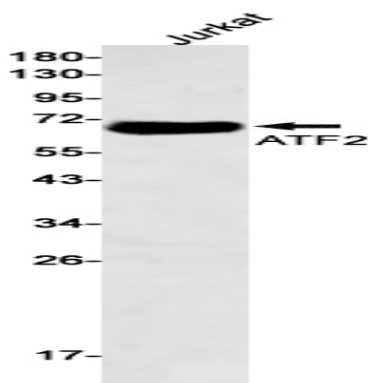
Background

This gene encodes a transcription factor that is a member of the leucine zipper family of DNA binding proteins. This protein binds to the cAMP-responsive element (CRE), an octameric palindrome. The protein forms a homodimer or heterodimer with c-Jun and stimulates CRE-dependent transcription. The protein is also a histone acetyltransferase (HAT) that specifically acetylates histones H2B and H4 in vitro;

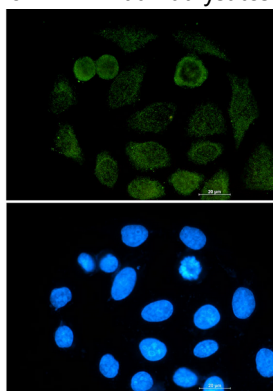
Research Area

TGF-beta signaling pathway, PI3K-Akt signaling pathway, MAPK signaling pathway

Image Data



Western blot analysis of ATF2 in Jurkat lysates using ATF2 antibody.



Immunocytochemistry analysis of ATF2 (green) in A549 using ATF2 antibody, and DAPI (blue).

Note

For research use only.