

**Product Name: Amyloid Precursor Protein Rabbit Monoclonal Antibody****Catalog #: AMRe85234**

For research use only.

**Summary**

<b>Description</b>	Recombinant rabbit monoclonal antibody
<b>Host</b>	Rabbit
<b>Application</b>	WB,IHC,ICC
<b>Reactivity</b>	Human,Mouse,Rat
<b>Conjugation</b>	Unconjugated
<b>Modification</b>	Unmodified
<b>Isotype</b>	IgG
<b>Clonality</b>	Monoclonal
<b>Form</b>	Liquid
<b>Concentration</b>	0.49mg/ml. The concentration of this product may be batch-dependent.
<b>Storage</b>	Aliquot and store at -20°C (valid for 12 months). Avoid freeze/thaw cycles.
<b>Shipping</b>	Ice bags
<b>Buffer</b>	Purified antibody in TBS with 0.05% sodium azide,0.05%protective protein and 50% glycerol.
<b>Purification</b>	Affinity Purification

**Application**

<b>Dilution Ratio</b>	WB 1:500-1:1000,IHC 1:50-1:100,ICC 1:50-1:200
<b>Molecular Weight</b>	Calculated MW: 87 kDa; Observed MW: 100 kDa

**Antigen Information**

<b>Gene Name</b>	Amyloid Precursor Protein
<b>Alternative Names</b>	APP; A4; AD1; Amyloid beta A4 protein; ABPP; APPI; APP; Alzheimer disease amyloid protein; Cerebral vascular amyloid peptide; CVAP; PreA4; Protease nexin-II; PN-II
<b>Gene ID</b>	351.0
<b>SwissProt ID</b>	P05067
<b>Immunogen</b>	A synthetic peptide of human Amyloid Precursor Protein

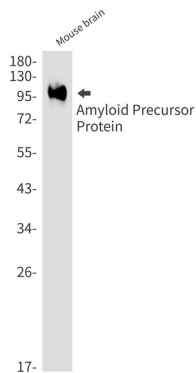
**Background**

APP a cell surface receptor that influences neurite growth, neuronal adhesion and axonogenesis. Cleaved by secretases to form a number of peptides, some of which bind to the acetyltransferase complex Fe65/TIP60 to promote transcriptional activation.

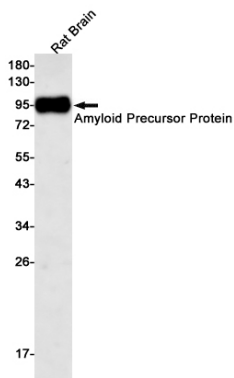
## Research Area

Apoptosis, Notch signaling pathway

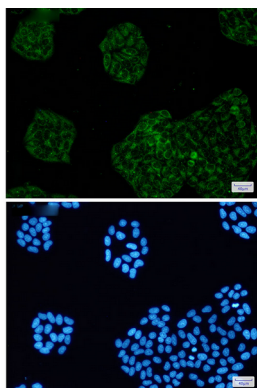
## Image Data



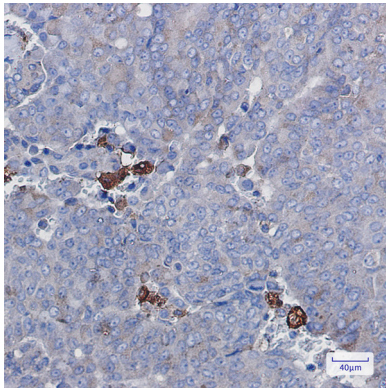
Western blot analysis of Amyloid Precursor Protein in mouse brain lysates using Amyloid Precursor Protein antibody.



Western blot analysis of Amyloid Precursor Protein in rat Brain lysates using Amyloid Precursor Protein antibody.



Immunocytochemistry analysis of Amyloid Precursor Protein (green) in HeLa using Amyloid Precursor Protein antibody, and DAPI (blue).



Immunohistochemistry analysis of paraffin-embedded Human breast cancer using Amyloid Precursor Protein antibody. High-pressure and temperature Sodium Citrate pH 6.0 was used for antigen retrieval.