

---

**Product Name: VCAM1 Rabbit Monoclonal Antibody****Catalog #: AMRe85228**

For research use only.

**Summary**

<b>Description</b>	Recombinant rabbit monoclonal antibody
<b>Host</b>	Rabbit
<b>Application</b>	WB,IHC,IP
<b>Reactivity</b>	Human,Mouse,Rat
<b>Conjugation</b>	Unconjugated
<b>Modification</b>	Unmodified
<b>Isotype</b>	IgG
<b>Clonality</b>	Monoclonal
<b>Form</b>	Liquid
<b>Concentration</b>	0.62mg/ml. The concentration of this product may be batch-dependent.
<b>Storage</b>	Aliquot and store at -20°C (valid for 12 months). Avoid freeze/thaw cycles.
<b>Shipping</b>	Ice bags
<b>Buffer</b>	Purified antibody in TBS with 0.05% sodium azide,0.05%protective protein and 50% glycerol.
<b>Purification</b>	Affinity Purification

**Application**

<b>Dilution Ratio</b>	WB 1:500-1:1000,IHC 1:50-1:100,IP 1:10-1:20
<b>Molecular Weight</b>	Calculated MW: 81 kDa; Observed MW: 110 kDa

**Antigen Information**

<b>Gene Name</b>	VCAM1
<b>Alternative Names</b>	VCAM1; L1CAM; Vascular cell adhesion protein 1; V-CAM 1; VCAM-1; INCAM-100; CD antigen CD106
<b>Gene ID</b>	7412.0
<b>SwissProt ID</b>	P19320
<b>Immunogen</b>	A synthetic peptide of VCAM1

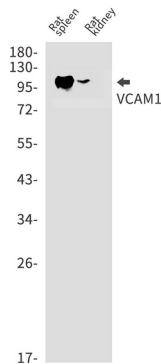
**Background**

This gene is a member of the Ig superfamily and encodes a cell surface sialoglycoprotein expressed by cytokine-activated endothelium. This type I membrane protein mediates leukocyte-endothelial cell adhesion and signal transduction, and may

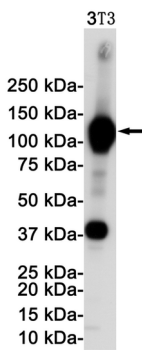
play a role in the development of atherosclerosis and rheumatoid arthritis. Two alternatively spliced transcripts encoding different isoforms have been described for this gene. Tissue specificity:

## Research Area

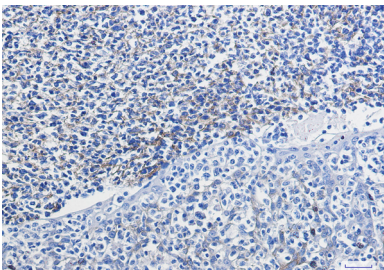
## Image Data



Western blot analysis of VCAM1 in rat spleen, rat kidney lysates using VCAM1 antibody.



Western blot analysis of VCAM1 in 3T3 lysates using VCAM1 antibody.



Immunohistochemistry analysis of paraffin-embedded Human tonsil using VCAM1 antibody. High-pressure and temperature Sodium Citrate pH 6.0 was used for antigen retrieval.