

Product Name: GSK3 alpha/beta Rabbit Monoclonal Antibody
Catalog #: AMRe85219



Summary

Production Name	GSK3 alpha/beta Rabbit Monoclonal Antibody
Description	Rabbit Monoclonal antibody
Host	Rabbit
Application	WB
Reactivity	Human,Rat,Hamster

Performance

Conjugation	Unconjugated
Modification	Unmodified
Isotype	IgG
Clonality	Monoclonal
Form	Liquid
Storage	Store at 4°C short term. Aliquot and store at -20°C long term. Avoid freeze/thaw cycles.
Buffer	Purified antibody in TBS with 0.05% sodium azide, 0.05% protective protein and 50% glycerol.
Purification	Affinity Purification

Immunogen

Gene Name	GSK3 alpha/beta
Alternative Names	Serine/threonine-protein kinase GSK3A
Gene ID	2931.0
SwissProt ID	P49840. A synthetic peptide of human GSK3 alpha

Application

Dilution Ratio	WB:1:500-1:1000
Molecular Weight	Calculated MW: 51 kDa; Observed MW: 51,47 kDa

Background

Product Name: GSK3 alpha/beta Rabbit Monoclonal Antibody
Catalog #: AMRe85219

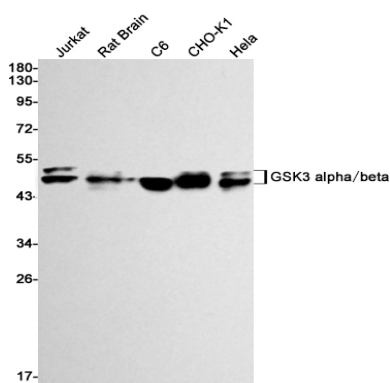


GSK3A a proline-directed protein kinase of the GSK family. Implicated in the control of several regulatory proteins including glycogen synthase, Myb, and c-Jun. GSK3 and GSK3 have similar functions. GSK3 phosphorylates tau, the principal component of neurofibrillary tangles in Alzheimer disease and is required for maximal production of amyloid plaque peptides by secretase.

Research Area

Wnt signaling pathway

Image Data



Western blot analysis of GSK3 alpha + beta in Jurkat, rat Brain, C6, CHO-K1, HeLa lysates using GSK3 alpha/beta antibody.

Note

For research use only.