

**Product Name: NEDD8 Rabbit Monoclonal Antibody****Catalog #: AMRe85218**

For research use only.

**Summary**

<b>Description</b>	Recombinant rabbit monoclonal antibody
<b>Host</b>	Rabbit
<b>Application</b>	WB,IHC,ICC,IP
<b>Reactivity</b>	Human
<b>Conjugation</b>	Unconjugated
<b>Modification</b>	Unmodified
<b>Isotype</b>	IgG
<b>Clonality</b>	Monoclonal
<b>Form</b>	Liquid
<b>Concentration</b>	0.62mg/ml. The concentration of this product may be batch-dependent.
<b>Storage</b>	Aliquot and store at -20°C (valid for 12 months). Avoid freeze/thaw cycles.
<b>Shipping</b>	Ice bags
<b>Buffer</b>	Purified antibody in TBS with 0.05% sodium azide,0.05%protective protein and 50% glycerol.
<b>Purification</b>	Affinity Purification

**Application**

<b>Dilution Ratio</b>	WB 1:500-1:1000,IHC 1:50-1:100,ICC 1:50-1:200,IP 1:10-1:20
<b>Molecular Weight</b>	Calculated MW: 9 kDa; Observed MW: 9 kDa

**Antigen Information**

<b>Gene Name</b>	NEDD8
<b>Alternative Names</b>	NEDD8; NEDD8; Neddylin; Neural precursor cell expressed developmentally down-regulated protein 8; NEDD-8; Ubiquitin-like protein Nedd8
<b>Gene ID</b>	4738.0
<b>SwissProt ID</b>	Q15843
<b>Immunogen</b>	A synthetic peptide of human NEDD8

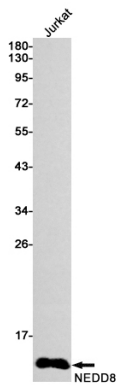
**Background**

Neural precursor cell-expressed developmentally downregulated protein 8 (NEDD8), also known as Rub1 (related to ubiquitin 1) in plants and yeast, is a member of the ubiquitin-like protein family. The covalent attachment of NEDD8 to target proteins,

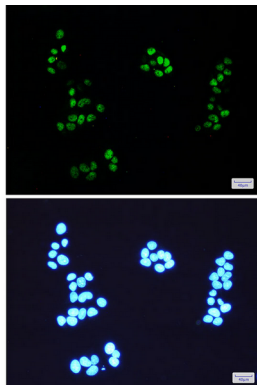
termed neddylation, is a reversible, multi-step process analogous to ubiquitination.

## Research Area

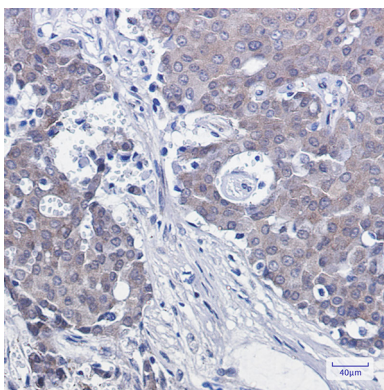
## Image Data



Western blot analysis of NEDD8 in Jurkat lysates using NEDD8 antibody.



Immunocytochemistry analysis of NEDD8 (green) in Hela using NEDD8 antibody, and DAPI (blue)



Immunohistochemistry analysis of paraffin-embedded Human breast cancer using NEDD8 antibody. High-pressure and temperature Sodium Citrate pH 6.0 was used for antigen retrieval.