

---

**Product Name: Beclin 1 Rabbit Monoclonal Antibody****Catalog #: AMRe85210**

For research use only.

**Summary**

<b>Description</b>	Recombinant rabbit monoclonal antibody
<b>Host</b>	Rabbit
<b>Application</b>	WB,IP
<b>Reactivity</b>	Human,Mouse,Rat
<b>Conjugation</b>	Unconjugated
<b>Modification</b>	Unmodified
<b>Isotype</b>	IgG
<b>Clonality</b>	Monoclonal
<b>Form</b>	Liquid
<b>Concentration</b>	
<b>Storage</b>	Aliquot and store at -20°C (valid for 12 months). Avoid freeze/thaw cycles.
<b>Shipping</b>	Ice bags
<b>Buffer</b>	Purified antibody in TBS with 0.05% sodium azide,0.05%protective protein and 50% glycerol.
<b>Purification</b>	Affinity Purification

**Application**

<b>Dilution Ratio</b>	WB 1:500-1:1000,IP 1:10-1:20
<b>Molecular Weight</b>	Calculated MW: 52 kDa; Observed MW: 60 kDa

**Antigen Information**

<b>Gene Name</b>	Beclin 1
<b>Alternative Names</b>	BECN1
<b>Gene ID</b>	8678.0
<b>SwissProt ID</b>	Q14457
<b>Immunogen</b>	Recombinant protein of human Beclin 1

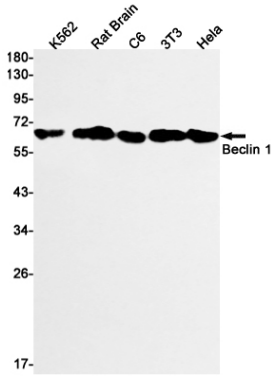
**Background**

Plays a central role in autophagy. Required for the abscission step in cytokinesis. May play a role in antiviral host defense. Protects against infection by a neurovirulent strain of Sindbis virus.

## Research Area

Autophagy, Apoptosis

## Image Data



Western blot analysis of Beclin 1 in K562, rat Brain, C6, 3T3, HeLa lysates using Beclin 1 antibody.