
Product Name: Anterior Gradient 2 Rabbit Monoclonal Antibody**Catalog #: AMRe85184**

For research use only.

Summary

Description	Recombinant rabbit monoclonal antibody
Host	Rabbit
Application	WB,IHC,ICC,IP
Reactivity	Human,Rat
Conjugation	Unconjugated
Modification	Unmodified
Isotype	IgG
Clonality	Monoclonal
Form	Liquid
Concentration	0.62mg/ml. The concentration of this product may be batch-dependent.
Storage	Aliquot and store at -20°C (valid for 12 months). Avoid freeze/thaw cycles.
Shipping	Ice bags
Buffer	Purified antibody in TBS with 0.05% sodium azide,0.05%protective protein and 50% glycerol.
Purification	Affinity Purification

Application

Dilution Ratio	WB 1:500-1:1000,IHC 1:50-1:100,ICC 1:50-1:200,IP 1:10-1:20
Molecular Weight	Calculated MW: 20 kDa; Observed MW: 20 kDa

Antigen Information

Gene Name	Anterior Gradient 2
Alternative Names	Anterior gradient protein 2 homolog; AG-2; hAG-2; HPC8; Secreted cement gland protein XAG-2 homolog; AGR2; AG2; GOB4; XAG2
Gene ID	10551.0
SwissProt ID	O95994
Immunogen	A synthetic peptide of human Anterior Gradient 2

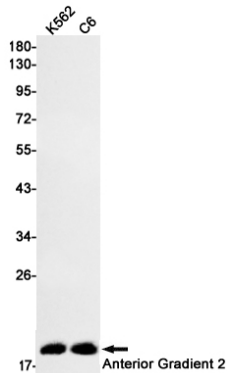
Background

AGR2 is a member of the protein disulfide isomerase (PDI) family of proteins and a homolog of the *Xenopus laevis* cement gland protein. Required for MUC2 post-transcriptional synthesis and secretion. May play a role in the production of mucus by

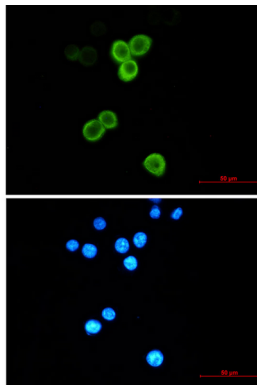
intestinal cells (By similarity). Proto-oncogene that may play a role in cell migration, cell differentiation and cell growth.

Research Area

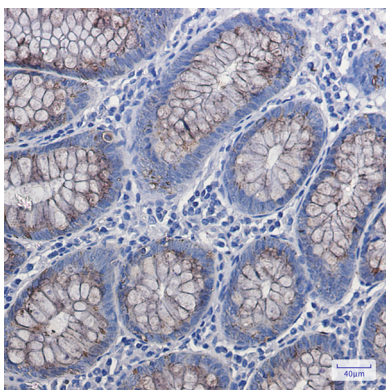
Image Data



Western blot analysis of Anterior Gradient 2 in K562, C6 lysates using Anterior Gradient 2 antibody.



Immunocytochemistry analysis of Anterior Gradient 2 (green) in MCF-7 using Anterior Gradient 2 antibody, and DAPI (blue)



Immunohistochemistry analysis of paraffin-embedded colon using Anterior Gradient 2 antibody. High-pressure and temperature Sodium Citrate pH 6.0 was used for antigen retrieval.