

---

**Product Name: CD90 Rabbit Monoclonal Antibody****Catalog #: AMRe85183**

For research use only.

**Summary**

<b>Description</b>	Recombinant rabbit monoclonal antibody
<b>Host</b>	Rabbit
<b>Application</b>	WB,IHC
<b>Reactivity</b>	Rat
<b>Conjugation</b>	Unconjugated
<b>Modification</b>	Unmodified
<b>Isotype</b>	IgG
<b>Clonality</b>	Monoclonal
<b>Form</b>	Liquid
<b>Concentration</b>	
<b>Storage</b>	Aliquot and store at -20°C (valid for 12 months). Avoid freeze/thaw cycles.
<b>Shipping</b>	Ice bags
<b>Buffer</b>	Purified antibody in TBS with 0.05% sodium azide,0.05%protective protein and 50% glycerol.
<b>Purification</b>	Affinity Purification

**Application**

<b>Dilution Ratio</b>	WB 1:500-1:1000,IHC 1:50-1:100
<b>Molecular Weight</b>	Calculated MW: 18 kDa; Observed MW: 22 kDa

**Antigen Information**

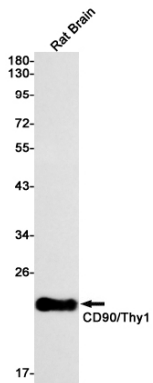
<b>Gene Name</b>	CD90
<b>Alternative Names</b>	THY1; Thy-1 membrane glycoprotein; CDw90; Thy-1 antigen; CD antigen CD90
<b>Gene ID</b>	7070.0
<b>SwissProt ID</b>	P04216
<b>Immunogen</b>	A synthetic peptide of human CD90

**Background**

Thy1 is a GPI-anchored, developmentally regulated protein involved in various signaling cascades that mediate neurite outgrowth, T cell activation, tumor suppression, apoptosis, and fibrosis. It is highly expressed on the surface of adult neurons and is thought to play a role in modulating adhesive and migratory events, such as neurite extension.

## Research Area

## Image Data



Western blot analysis of CD90/Thy1 in rat Brain lysates using CD90 antibody.