

---

**Product Name: LRP1 Rabbit Monoclonal Antibody****Catalog #: AMRe85180**

For research use only.

**Summary**

<b>Description</b>	Recombinant rabbit monoclonal antibody
<b>Host</b>	Rabbit
<b>Application</b>	WB,IHC,ICC,IP
<b>Reactivity</b>	Human,Mouse,Rat
<b>Conjugation</b>	Unconjugated
<b>Modification</b>	Unmodified
<b>Isotype</b>	IgG
<b>Clonality</b>	Monoclonal
<b>Form</b>	Liquid
<b>Concentration</b>	0.49mg/ml. The concentration of this product may be batch-dependent.
<b>Storage</b>	Aliquot and store at -20°C (valid for 12 months). Avoid freeze/thaw cycles.
<b>Shipping</b>	Ice bags
<b>Buffer</b>	Purified antibody in TBS with 0.05% sodium azide,0.05%protective protein and 50% glycerol.
<b>Purification</b>	Affinity Purification

**Application**

<b>Dilution Ratio</b>	WB 1:500-1:1000,IHC 1:50-1:100,ICC 1:50-1:200,IP 1:10-1:20
<b>Molecular Weight</b>	Calculated MW: 505 kDa; Observed MW: 85 kDa

**Antigen Information**

<b>Gene Name</b>	LRP1
<b>Alternative Names</b>	A2MR; alpha 2MR; Alpha 2 macroglobulin receptor; CD91; APR; LRP1; LRP85; TGFBR5
<b>Gene ID</b>	4035.0
<b>SwissProt ID</b>	Q07954
<b>Immunogen</b>	A synthetic peptide of human LRP1

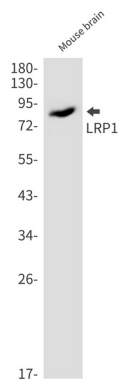
**Background**

Endocytic receptor involved in endocytosis and in phagocytosis of apoptotic cells. Required for early embryonic development. Involved in cellular lipid homeostasis. Involved in the plasma clearance of chylomicron remnants and activated LRPAP1 (alpha 2-macroglobulin), as well as the local metabolism of complexes between plasminogen activators and their endogenous

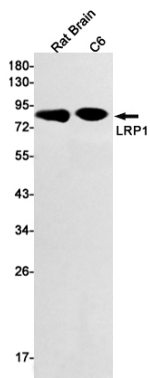
inhibitors. May modulate cellular events, such as APP metabolism, kinase-dependent intracellular signaling, neuronal calcium signaling as well as neurotransmission. Functions as a receptor for *Pseudomonas aeruginosa* exotoxin A.

## Research Area

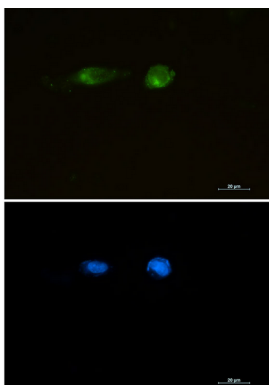
## Image Data



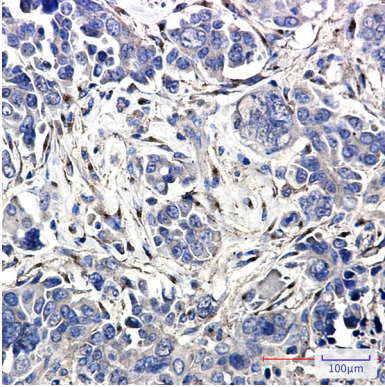
Western blot analysis of LRP1 in mouse brain lysates using LRP1 antibody.



Western blot analysis of LRP1 in rat Brain, C6 lysates using LRP1 antibody



Immunocytochemistry analysis of LRP1 (green) in U87-MG using LRP1 antibody, and DAPI (blue).



Immunohistochemistry analysis of paraffin-embedded Human Cholangiocarcinoma using LRP1 antibody. High-pressure and temperature Sodium Citrate pH 6.0 was used for antigen retrieval.