
Product Name: Glycophorin C Rabbit Monoclonal Antibody**Catalog #: AMRe85177**

For research use only.

Summary

Description	Recombinant rabbit monoclonal antibody
Host	Rabbit
Application	WB,ICC,IP
Reactivity	Human
Conjugation	Unconjugated
Modification	Unmodified
Isotype	IgG
Clonality	Monoclonal
Form	Liquid
Concentration	
Storage	Aliquot and store at -20°C (valid for 12 months). Avoid freeze/thaw cycles.
Shipping	Ice bags
Buffer	Purified antibody in TBS with 0.05% sodium azide,0.05%protective protein and 50% glycerol.
Purification	Affinity Purification

Application

Dilution Ratio	WB 1:500-1:1000,ICC 1:50-1:200,IP 1:10-1:20
Molecular Weight	Calculated MW: 14 kDa; Observed MW: 43 kDa

Antigen Information

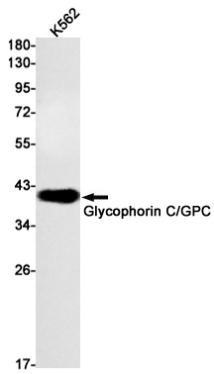
Gene Name	Glycophorin C
Alternative Names	GYPC; CD236; CD236R; GE; GPC; GYPD
Gene ID	2995.0
SwissProt ID	P04921
Immunogen	A synthetic peptide of human Glycophorin C

Background

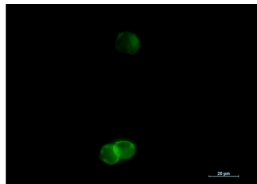
This protein is a minor sialoglycoprotein in human erythrocyte membranes. The blood group Gerbich antigens and receptors for Plasmodium falciparum merozoites are most likely located within the extracellular domain.

Research Area

Image Data



Western blot analysis of Glycophorin C/GPC in K562 lysates using Glycophorin C/GPC antibody.



Immunocytochemistry analysis of Glycophorin C (green) in K562 using Glycophorin C antibody, and DAPI (blue).

