

Product Name: MSH6 Rabbit Monoclonal Antibody**Catalog #: AMRe85173**

For research use only.

Summary

Description	Recombinant rabbit monoclonal antibody
Host	Rabbit
Application	WB,IHC,ICC
Reactivity	Human,Mouse,Rat
Conjugation	Unconjugated
Modification	Unmodified
Isotype	IgG
Clonality	Monoclonal
Form	Liquid
Concentration	0.62mg/ml. The concentration of this product may be batch-dependent.
Storage	Aliquot and store at -20°C (valid for 12 months). Avoid freeze/thaw cycles.
Shipping	Ice bags
Buffer	Purified antibody in TBS with 0.05% sodium azide,0.05%protective protein and 50% glycerol.
Purification	Affinity Purification

Application

Dilution Ratio	WB 1:500-1:1000,IHC 1:50-1:100,ICC 1:50-1:200
Molecular Weight	Calculated MW: 153 kDa; Observed MW: 163 kDa

Antigen Information

Gene Name	MSH6
Alternative Names	MSH6; GTBP; DNA mismatch repair protein Msh6; hMSH6; G/T mismatch-binding protein; GTBP; GTMBP; MutS-alpha 160 kDa subunit; p160
Gene ID	2956.0
SwissProt ID	P52701
Immunogen	A synthetic peptide of human MSH6

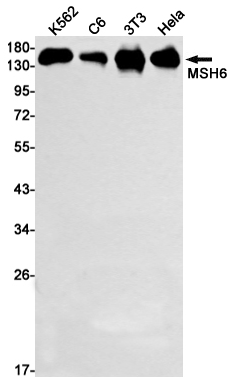
Background

The DNA mismatch repair system (MMR) repairs post-replication DNA, inhibits recombination between nonidentical DNA sequences, and induces both checkpoint and apoptotic responses following certain types of DNA damage. MSH2 (MutS

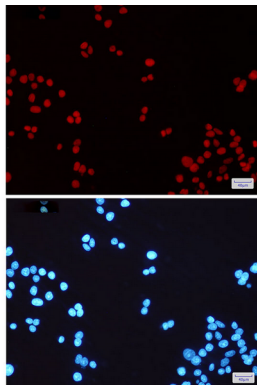
homologue 2) forms the hMutS- α dimer with MSH6 and is an essential component of the mismatch repair process.

Research Area

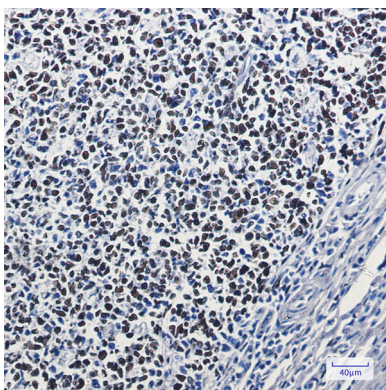
Image Data



Western blot analysis of MSH6 in K562, C6, 3T3, HeLa lysates using MSH6 antibody.



Immunocytochemistry analysis of MSH6(green) in HeLa using MSH6 antibody, and DAPI(blue)



Immunohistochemistry analysis of paraffin-embedded Human tonsil using MSH6 antibody. High-pressure and temperature Sodium Citrate pH 6.0 was used for antigen retrieval.