

Product Name: ALDH1A1 Rabbit Monoclonal Antibody**Catalog #: AMRe85171**

For research use only.

Summary

Description	Recombinant rabbit monoclonal antibody
Host	Rabbit
Application	WB,IHC,IP
Reactivity	Human,Mouse
Conjugation	Unconjugated
Modification	Unmodified
Isotype	IgG
Clonality	Monoclonal
Form	Liquid
Concentration	
Storage	Aliquot and store at -20°C (valid for 12 months). Avoid freeze/thaw cycles.
Shipping	Ice bags
Buffer	Purified antibody in TBS with 0.05% sodium azide,0.05%protective protein and 50% glycerol.
Purification	Affinity Purification

Application

Dilution Ratio	WB 1:500-1:1000,IHC 1:50-1:100,IP 1:10-1:20
Molecular Weight	Calculated MW: 55 kDa; Observed MW: 55 kDa

Antigen Information

Gene Name	ALDH1A1
Alternative Names	ALDH1A1; ALDC; ALDH1; PUMB1; Retinal dehydrogenase 1; RALDH 1; RaLDH1; ALDH-E1; ALHDII; Aldehyde dehydrogenase family 1 member A1; Aldehyde dehydrogenase; cytosolic
Gene ID	216.0
SwissProt ID	P00352
Immunogen	A synthetic peptide of human ALDH1A1

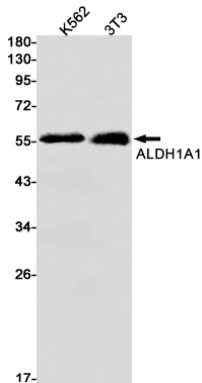
Background

ALDH1A1 is a liver cytosolic isoform of acetaldehyde dehydrogenase and is involved in the major pathway of alcohol metabolism along with alcohol dehydrogenase . ALDH1A1 is also known as retinal dehydrogenase 1 and is involved in retinol

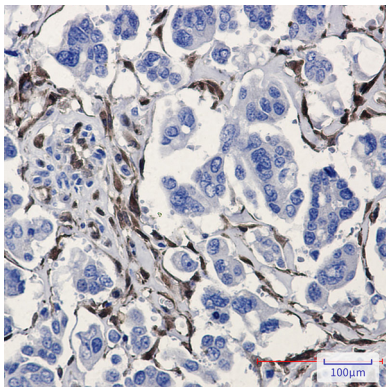
metabolism, converting retinol to retinoic acid.

Research Area

Image Data



Western blot analysis of ALDH1A1 in K562, 3T3 lysates using ALDH1A1 antibody.



Immunohistochemistry analysis of paraffin-embedded Human Cholangiocarcinoma using ALDH1A1 antibody. High-pressure and temperature Sodium Citrate pH 6.0 was used for antigen retrieval.