

**Product Name: SLP2 Rabbit Monoclonal Antibody****Catalog #: AMRe85161**

For research use only.

**Summary**

<b>Description</b>	Recombinant rabbit monoclonal antibody
<b>Host</b>	Rabbit
<b>Application</b>	WB,ICC,IP
<b>Reactivity</b>	Human,Mouse,Rat
<b>Conjugation</b>	Unconjugated
<b>Modification</b>	Unmodified
<b>Isotype</b>	IgG
<b>Clonality</b>	Monoclonal
<b>Form</b>	Liquid
<b>Concentration</b>	
<b>Storage</b>	Aliquot and store at -20°C (valid for 12 months). Avoid freeze/thaw cycles.
<b>Shipping</b>	Ice bags
<b>Buffer</b>	Purified antibody in TBS with 0.05% sodium azide,0.05%protective protein and 50% glycerol.
<b>Purification</b>	Affinity Purification

**Application**

<b>Dilution Ratio</b>	WB 1:500-1:1000,ICC 1:50-1:200,IP 1:10-1:20
<b>Molecular Weight</b>	Calculated MW: 39 kDa; Observed MW: 39 kDa

**Antigen Information**

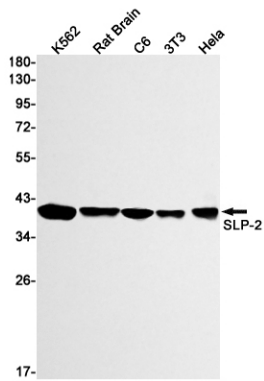
<b>Gene Name</b>	SLP2
<b>Alternative Names</b>	stomatin like 2; SLP-2; HSPC108
<b>Gene ID</b>	30968.0
<b>SwissProt ID</b>	Q9UJZ1
<b>Immunogen</b>	A synthetic peptide of human STOML2

**Background**

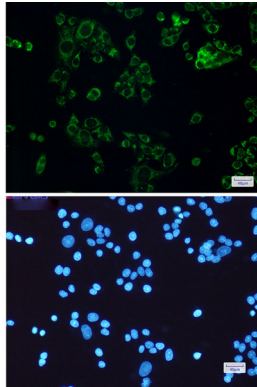
Mitochondrial protein that probably regulates the biogenesis and the activity of mitochondria.

**Research Area**

## Image Data



Western blot analysis of SLP2 in K562, rat Brain, C6, 3T3, HeLa lysates using SLP2 antibody.



Immunocytochemistry analysis of SLP2(green) in HeLa using SLP2 antibody, and DAPI(blue)