

Product Name: POLD1 Rabbit Monoclonal Antibody**Catalog #: AMRe85160**

For research use only.

Summary

Description	Recombinant rabbit monoclonal antibody
Host	Rabbit
Application	WB,ICC
Reactivity	Human,Mouse,Rat
Conjugation	Unconjugated
Modification	Unmodified
Isotype	IgG
Clonality	Monoclonal
Form	Liquid
Concentration	
Storage	Aliquot and store at -20°C (valid for 12 months). Avoid freeze/thaw cycles.
Shipping	Ice bags
Buffer	Purified antibody in TBS with 0.05% sodium azide,0.05%protective protein and 50% glycerol.
Purification	Affinity Purification

Application

Dilution Ratio	WB 1:500-1:1000,ICC 1:50-1:200
Molecular Weight	Calculated MW: 124 kDa; Observed MW: 124 kDa

Antigen Information

Gene Name	POLD1
Alternative Names	CDC2; CRCS10; MDPL; POLD; POLD1
Gene ID	5424.0
SwissProt ID	P28340
Immunogen	A synthetic peptide of human DNA Polymerase delta, catalytic subunit

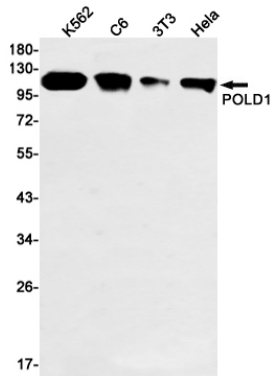
Background

Possesses two enzymatic activities: DNA synthesis (polymerase) and an exonucleolytic activity that degrades single stranded DNA in the 3'- to 5'-direction. Required with its accessory proteins (proliferating cell nuclear antigen (PCNA) and replication factor C (RFC) or activator 1) for leading strand synthesis. Also involved in completing Okazaki fragments initiated by the DNA

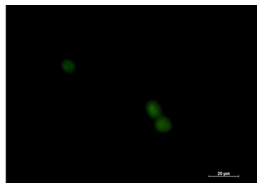
polymerase alpha/primase complex.

Research Area

Image Data



Western blot analysis of POLD1 in K562, C6, 3T3, HeLa lysates using POLD1 antibody.



Immunocytochemistry analysis of POLD1 (green) in K562 using POLD1 antibody, and DAPI (blue).

