
Product Name: CD13 Rabbit Monoclonal Antibody**Catalog #: AMRe85155**

For research use only.

Summary

Description	Recombinant rabbit monoclonal antibody
Host	Rabbit
Application	WB,IHC,ICC,IP
Reactivity	Human,Rat
Conjugation	Unconjugated
Modification	Unmodified
Isotype	IgG
Clonality	Monoclonal
Form	Liquid
Concentration	0.62mg/ml. The concentration of this product may be batch-dependent.
Storage	Aliquot and store at -20°C (valid for 12 months). Avoid freeze/thaw cycles.
Shipping	Ice bags
Buffer	Purified antibody in TBS with 0.05% sodium azide,0.05%protective protein and 50% glycerol.
Purification	Affinity Purification

Application

Dilution Ratio	WB 1:500-1:1000,IHC 1:50-1:100,ICC 1:50-1:200,IP 1:10-1:20
Molecular Weight	Calculated MW: 110 kDa; Observed MW: 160 kDa

Antigen Information

Gene Name	CD13 ANPEP; APN; CD13; PEPN; Aminopeptidase N; AP-N; hAPN; Alanyl aminopeptidase;
Alternative Names	Aminopeptidase M; AP-M; Microsomal aminopeptidase; Myeloid plasma membrane glycoprotein CD13; gp150; CD antigen CD13
Gene ID	290.0
SwissProt ID	P15144
Immunogen	A synthetic peptide of human CD13

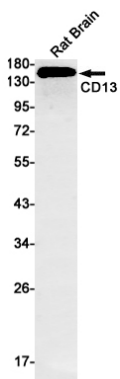
Background

Aminopeptidase N (APN, CD13) is a widely expressed, membrane-bound proteolytic enzyme that breaks down peptides during

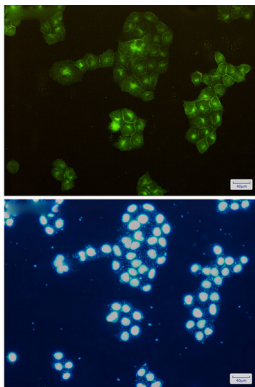
digestion, cleaves cell surface antigens during antigen presentation, and acts as a receptor for human viruses, including several coronaviruses. Plays a role in the final digestion of peptides generated from hydrolysis of proteins by gastric and pancreatic proteases.

Research Area

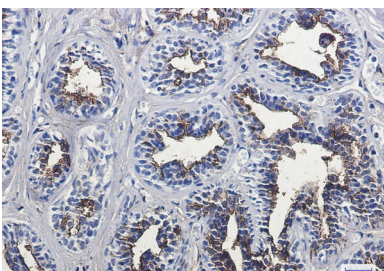
Image Data



Western blot analysis of CD13 in rat Brain lysates using CD13 antibody.



Immunocytochemistry analysis of CD13 (green) in HeLa using CD13 antibody, and DAPI (blue)



Immunohistochemistry analysis of paraffin-embedded Human breast cancer using CD13 antibody. High-pressure and temperature Sodium Citrate pH 6.0 was used for antigen retrieval.