
Product Name: COPS8 Rabbit Monoclonal Antibody**Catalog #: AMRe85146**

For research use only.

Summary

Description	Recombinant rabbit monoclonal antibody
Host	Rabbit
Application	WB,IHC,ICC,IP
Reactivity	Human,Mouse,Rat
Conjugation	Unconjugated
Modification	Unmodified
Isotype	IgG
Clonality	Monoclonal
Form	Liquid
Concentration	0.62mg/ml. The concentration of this product may be batch-dependent.
Storage	Aliquot and store at -20°C (valid for 12 months). Avoid freeze/thaw cycles.
Shipping	Ice bags
Buffer	Purified antibody in TBS with 0.05% sodium azide,0.05%protective protein and 50% glycerol.
Purification	Affinity Purification

Application

Dilution Ratio	WB 1:500-1:1000,IHC 1:50-1:100,ICC 1:50-1:200,IP 1:10-1:20
Molecular Weight	Calculated MW: 23 kDa; Observed MW: 23 kDa

Antigen Information

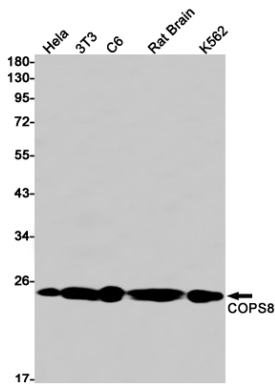
Gene Name	COPS8
Alternative Names	COP9 signalosome subunit 8; COP9; CSN8; SGN8
Gene ID	10920.0
SwissProt ID	Q99627
Immunogen	A synthetic peptide of human COPS8

Background

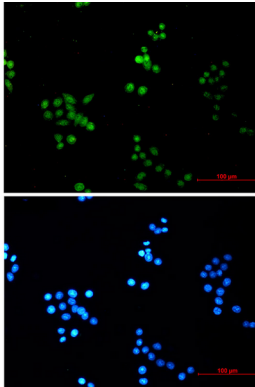
Component of the COP9 signalosome complex (CSN), a complex involved in various cellular and developmental processes.

Research Area

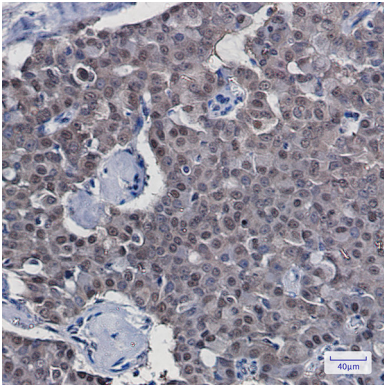
Image Data



Western blot analysis of COPS8 in HeLa, 3T3, C6, rat Brain, K562 lysates using COPS8 antibody.



Immunocytochemistry analysis of COPS8 (green) in HeLa using COPS8 antibody, and DAPI (blue).



Immunohistochemistry analysis of paraffin-embedded Human breast cancer tissue using COPS8 antibody. High-pressure and temperature Sodium Citrate pH 6.0 was used for antigen retrieval.