

---

**Product Name: WTAP Rabbit Monoclonal Antibody****Catalog #: AMRe85137**

For research use only.

**Summary**

<b>Description</b>	Recombinant rabbit monoclonal antibody
<b>Host</b>	Rabbit
<b>Application</b>	WB,IHC,IP
<b>Reactivity</b>	Human
<b>Conjugation</b>	Unconjugated
<b>Modification</b>	Unmodified
<b>Isotype</b>	IgG
<b>Clonality</b>	Monoclonal
<b>Form</b>	Liquid
<b>Concentration</b>	
<b>Storage</b>	Aliquot and store at -20°C (valid for 12 months). Avoid freeze/thaw cycles.
<b>Shipping</b>	Ice bags
<b>Buffer</b>	Purified antibody in TBS with 0.05% sodium azide,0.05%protective protein and 50% glycerol.
<b>Purification</b>	Affinity Purification

**Application**

<b>Dilution Ratio</b>	WB 1:500-1:1000,IHC 1:50-1:100,IP 1:10-1:20
<b>Molecular Weight</b>	Calculated MW: 44 kDa; Observed MW: 55 kDa

**Antigen Information**

<b>Gene Name</b>	WTAP
<b>Alternative Names</b>	hFL(2)D; WT1-associated protein; Wilms tumor 1-associating protein; Pre-mRNA-splicing regulator WTAP
<b>Gene ID</b>	9589.0
<b>SwissProt ID</b>	Q15007
<b>Immunogen</b>	Recombinant protein of human WTAP

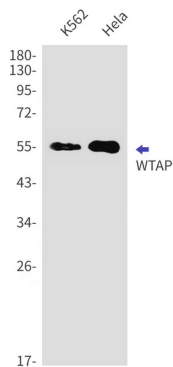
**Background**

The Wilms tumor suppressor gene WT1 appears to play a role in both transcriptional and posttranscriptional regulation of certain cellular genes. This gene encodes a WT1-associating protein, which is a ubiquitously expressed nuclear protein. Like

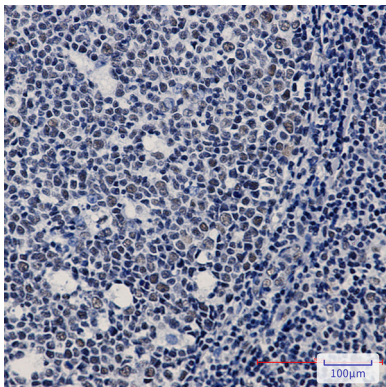
WT1 protein, this protein is localized throughout the nucleoplasm as well as in speckles and partially colocalizes with splicing factors. Alternative splicing of this gene results in several transcript variants encoding three different isoforms.

## Research Area

## Image Data



Western blot analysis of WTAP in K562, HeLa lysates using WTAP antibody.



Immunohistochemistry analysis of paraffin-embedded Human tonsil using WTAP antibody. High-pressure and temperature Sodium Citrate pH 6.0 was used for antigen retrieval.