

Product Name: SHP2 Rabbit Monoclonal Antibody
Catalog #: AMRe85131



Summary

Production Name	SHP2 Rabbit Monoclonal Antibody
Description	Rabbit Monoclonal antibody
Host	Rabbit
Application	WB,IP,IHC
Reactivity	Human

Performance

Conjugation	Unconjugated
Modification	Unmodified
Isotype	IgG
Clonality	Monoclonal
Form	Liquid
Storage	Store at 4°C short term. Aliquot and store at -20°C long term. Avoid freeze/thaw cycles.
Buffer	Purified antibody in TBS with 0.05% sodium azide, 0.05% protective protein and 50% glycerol.
Purification	Affinity Purification

Immunogen

Gene Name	SHP2 PTPN11; PTP2C; SHPTP2; Tyrosine-protein phosphatase non-receptor type 11; Protein-tyrosine phosphatase 1D; PTP-1D; Protein-tyrosine phosphatase 2C; PTP-2C; SH-PTP2;
Alternative Names	SHP-2; Shp2; SH-PTP3
Gene ID	5781.0
SwissProt ID	Q06124.A synthetic peptide of human SHP2

Application

Dilution Ratio	WB:1:500-1:1000,IP:1:10-1:20,IHC:1:50-1:100
Molecular Weight	Calculated MW: 68 kDa; Observed MW: 68 kDa

Product Name: SHP2 Rabbit Monoclonal Antibody
Catalog #: AMRe85131



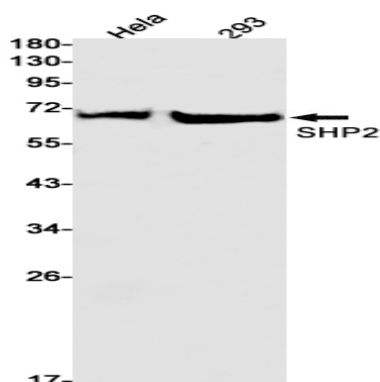
Background

SHP-2 is a SH2-containing ubiquitously expressed tyrosine-specific protein phosphatase. It participates in signaling events downstream of receptors for growth factors, cytokines, hormones, antigens and extracellular matrices in the control of cell growth, differentiation, migration, and death.

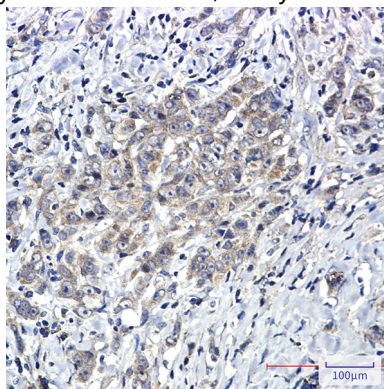
Research Area

Jak-STAT signaling pathway

Image Data



Western blot analysis of SHP2 in HeLa, 293 lysates using SHP2 antibody.



Immunohistochemistry analysis of paraffin-embedded Human breast cancer using SHP2 antibody. High-pressure and temperature Sodium Citrate pH 6.0 was used for antigen retrieval.

Note

For research use only.