

Product Name: MMP14 Rabbit Monoclonal Antibody**Catalog #: AMRe85114**

For research use only.

Summary

Description	Recombinant rabbit monoclonal antibody
Host	Rabbit
Application	WB,IHC,IP
Reactivity	Human,Hamster
Conjugation	Unconjugated
Modification	Unmodified
Isotype	IgG
Clonality	Monoclonal
Form	Liquid
Concentration	
Storage	Aliquot and store at -20°C (valid for 12 months). Avoid freeze/thaw cycles.
Shipping	Ice bags
Buffer	Purified antibody in TBS with 0.05% sodium azide,0.05%protective protein and 50% glycerol.
Purification	Affinity Purification

Application

Dilution Ratio	WB 1:500-1:1000,IHC 1:50-1:100,IP 1:10-1:20
Molecular Weight	Calculated MW: 66 kDa; Observed MW: 66 kDa

Antigen Information

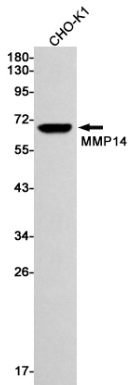
Gene Name	MMP14
Alternative Names	MMP-14; MMP-X1; MT-MMP; MT1MMP; MTMMP1; WNCHRS; MT1-MMP; MT-MMP 1
Gene ID	4323.0
SwissProt ID	P50281
Immunogen	A synthetic peptide of human MMP14

Background

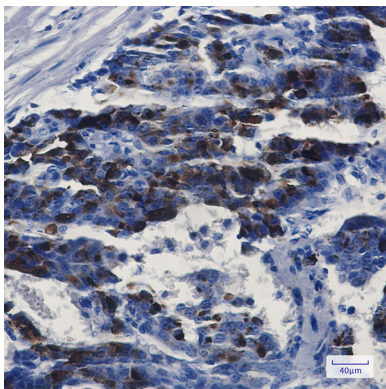
MMP14 Seems to specifically activate progelatinase A. May thus trigger invasion by tumor cells by activating progelatinase A on the tumor cell surface. Belongs to the peptidase M10A family.

Research Area

Image Data



Western blot analysis of MMP14 in CHO-K1 lysates using MMP14 antibody.



Immunohistochemistry analysis of paraffin-embedded Human breast cancer using MMP14 antibody. High-pressure and temperature Sodium Citrate pH 6.0 was used for antigen retrieval.