
Product Name: PD L2 Rabbit Monoclonal Antibody**Catalog #: AMRe85112**

For research use only.

Summary

Description	Recombinant rabbit monoclonal antibody
Host	Rabbit
Application	WB
Reactivity	Human,Rat
Conjugation	Unconjugated
Modification	Unmodified
Isotype	IgG
Clonality	Monoclonal
Form	Liquid
Concentration	
Storage	Aliquot and store at -20°C (valid for 12 months). Avoid freeze/thaw cycles.
Shipping	Ice bags
Buffer	Purified antibody in TBS with 0.05% sodium azide,0.05%protective protein and 50% glycerol.
Purification	Affinity Purification

Application

Dilution Ratio	WB 1:500-1:1000
Molecular Weight	Calculated MW: 31 kDa; Observed MW: 31 kDa

Antigen Information

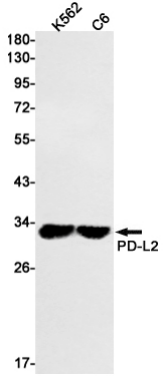
Gene Name	PD L2
Alternative Names	PD-1 ligand 2; PD-L2; PDCD1 ligand 2; B7-DC; CD273
Gene ID	80380.0
SwissProt ID	Q9BQ51
Immunogen	A synthetic peptide of human PD-L2

Background

Involved in the costimulatory signal, essential for T-cell proliferation and IFNG production in a PDCD1-independent manner. Interaction with PDCD1 inhibits T-cell proliferation by blocking cell cycle progression and cytokine production (By similarity).

Research Area

Image Data



Western blot analysis of PDL2 in K562, C6 lysates using PD L2 antibody.