

---

**Product Name: Thioredoxin Rabbit Monoclonal Antibody****Catalog #: AMRe84933**

For research use only.

**Summary**

<b>Description</b>	Recombinant rabbit monoclonal antibody
<b>Host</b>	Rabbit
<b>Application</b>	WB,IHC,ICC,IP
<b>Reactivity</b>	Human
<b>Conjugation</b>	Unconjugated
<b>Modification</b>	Unmodified
<b>Isotype</b>	IgG
<b>Clonality</b>	Monoclonal
<b>Form</b>	Liquid
<b>Concentration</b>	0.62mg/ml. The concentration of this product may be batch-dependent.
<b>Storage</b>	Aliquot and store at -20°C (valid for 12 months). Avoid freeze/thaw cycles.
<b>Shipping</b>	Ice bags
<b>Buffer</b>	Purified antibody in TBS with 0.05% sodium azide,0.05%protective protein and 50% glycerol.
<b>Purification</b>	Affinity Purification

**Application**

<b>Dilution Ratio</b>	WB 1:1000-1:10000,IHC 1:50-1:200,ICC 1:100-1:500,IP 1:10-1:20
<b>Molecular Weight</b>	Calculated MW: 12 kDa; Observed MW: 12 kDa

**Antigen Information**

<b>Gene Name</b>	Thioredoxin
<b>Alternative Names</b>	TXN; ADF; ATL-derived factor; SASP; Thioredoxin; TRX1; Thioredoxin delta 3; TRX; TXN delta 3; TRDX
<b>Gene ID</b>	7295.0
<b>SwissProt ID</b>	P10599
<b>Immunogen</b>	A synthetic peptide of human Thioredoxin/TRX

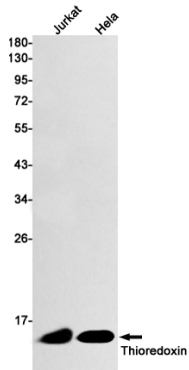
**Background**

Thioredoxin (Trx) is a redox protein that is found in several species, such as bacteria, plants and mammals, and contains a conserved active site, consisting of Trp-Cys-Gly-Pro-Cys. Participates in many cellular processes including redox signaling,

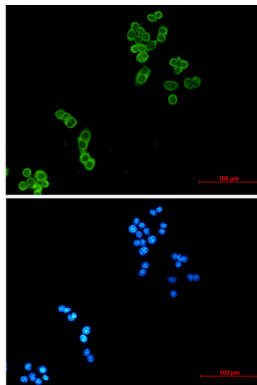
response to oxidative stress, and protein reduction

## Research Area

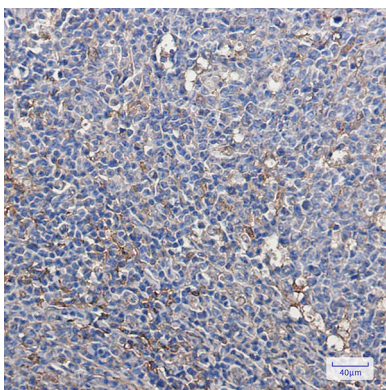
## Image Data



Western blot analysis of Thioredoxin in Jurkat, HeLa lysates using Thioredoxin antibody.



Immunocytochemistry analysis of Thioredoxin (green) in HeLa using Thioredoxin antibody, and DAPI (blue).



Immunohistochemistry analysis of paraffin-embedded Human tonsil using Thioredoxin/TRX antibody. High-pressure and temperature Sodium Citrate pH 6.0 was used for antigen retrieval.