

**Product Name: Phospho-PKC (Ser660) Rabbit Monoclonal Antibody****Catalog #: AMRe84931**

For research use only.

**Summary**

<b>Description</b>	Recombinant rabbit monoclonal antibody
<b>Host</b>	Rabbit
<b>Application</b>	WB,IHC
<b>Reactivity</b>	Human,Rat
<b>Conjugation</b>	Unconjugated
<b>Modification</b>	Phosphorylated
<b>Isotype</b>	IgG
<b>Clonality</b>	Monoclonal
<b>Form</b>	Liquid
<b>Concentration</b>	0.5mg/ml. The concentration of this product may be batch-dependent.
<b>Storage</b>	Aliquot and store at -20°C (valid for 12 months). Avoid freeze/thaw cycles.
<b>Shipping</b>	Ice bags
<b>Buffer</b>	Purified antibody in TBS with 0.05% sodium azide,0.05%protective protein and 50% glycerol.
<b>Purification</b>	Affinity Purification

**Application**

<b>Dilution Ratio</b>	WB 1:500-1:1000,IHC 1:50-1:100
<b>Molecular Weight</b>	Calculated MW: 77 kDa; Observed MW: 78-85 kDa

**Antigen Information**

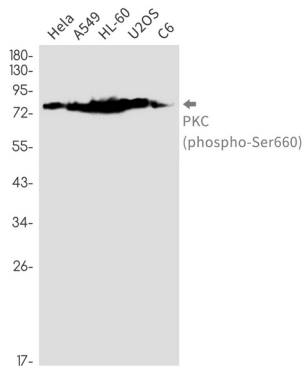
<b>Gene Name</b>	Phospho-PKC (Ser660)
<b>Alternative Names</b>	PRKCA; PKCA; PRKACA; Protein kinase C alpha type; PKC-A; PKC-alpha
<b>Gene ID</b>	5578/5579/5580/5581/5583/5588
<b>SwissProt ID</b>	P17252/P05771/Q05655/Q02156/P24723/Q04759
<b>Immunogen</b>	A synthetic phosphopeptide corresponding to residues surrounding Ser660 of human PKC

**Background**

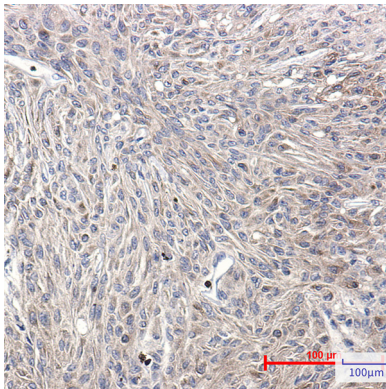
PKC alpha is an AGC kinase of the PKC family. A classical PKC downstream of many mitogenic and receptors. Classical PKCs are calcium-dependent enzymes that are activated by phosphatidylserine, diacylglycerol and phorbol esters.

## Research Area

### Image Data



Western blot analysis of PKC (Phospho-Ser660) in HeLa, A549, HL-60, U2OS, C6 lysates using Phospho-PKC (Ser660) antibody.



Immunohistochemistry analysis of paraffin-embedded Human Brain using PKC (Phospho-Ser660) antibody. High-pressure and temperature Sodium Citrate pH 6.0 was used for antigen retrieval.