

Product Name: Phospho-Rad17 (Ser656) Rabbit Monoclonal Antibody**Catalog #: AMRe84917**

For research use only.

Summary

| | |
|----------------------|--|
| Description | Recombinant rabbit monoclonal antibody |
| Host | Rabbit |
| Application | WB,IHC,ICC |
| Reactivity | Human |
| Conjugation | Unconjugated |
| Modification | Phosphorylated |
| Isotype | IgG |
| Clonality | Monoclonal |
| Form | Liquid |
| Concentration | 0.5mg/ml. The concentration of this product may be batch-dependent. |
| Storage | Aliquot and store at -20°C (valid for 12 months). Avoid freeze/thaw cycles. |
| Shipping | Ice bags |
| Buffer | Purified antibody in TBS with 0.05% sodium azide,0.05%protective protein and 50% glycerol. |
| Purification | Affinity Purification |

Application

| | |
|-------------------------|---|
| Dilution Ratio | WB 1:500-1:1000,IHC 1:50-1:100,ICC 1:50-1:200 |
| Molecular Weight | Calculated MW: 77 kDa; Observed MW: 80 kDa |

Antigen Information

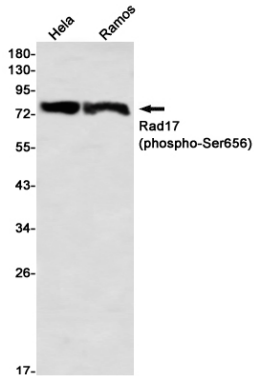
| | |
|--------------------------|--|
| Gene Name | Phospho-Rad17 (Ser656) |
| Alternative Names | RAD17; R24L; Cell cycle checkpoint protein RAD17; hRad17; RF-C/activator 1 homolog |
| Gene ID | 5884.0 |
| SwissProt ID | O75943 |
| Immunogen | A synthetic phosphopeptide corresponding to residues surrounding Ser656 of human Rad17 |

Background

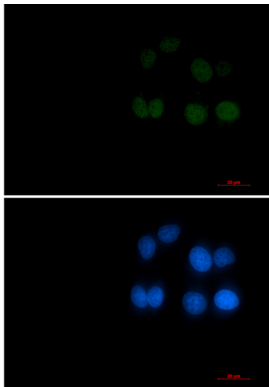
Essential for sustained cell growth, maintenance of chromosomal stability, and ATR-dependent checkpoint activation upon DNA damage.

Research Area

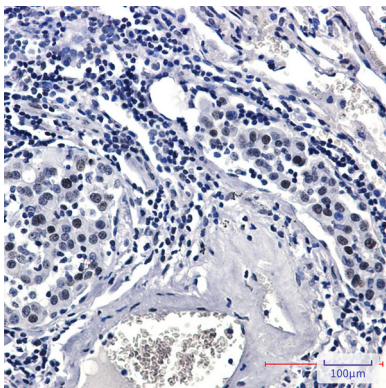
Image Data



Western blot analysis of Rad17 (Phospho-Ser656) in HeLa, Ramos lysates using Rad17 (Phospho-Ser656) antibody.



Immunocytochemistry analysis of Phospho-Rad17 (Ser656) (green) in HeLa using Phospho-Rad17 (Ser656) antibody, and DAPI (blue).



Immunohistochemistry analysis of paraffin-embedded Human lung cancer tissue using Rad17 (Phospho-Ser656) antibody. High-pressure and temperature Sodium Citrate pH 6.0 was used for antigen retrieval.