

**Product Name: Phospho-PML Protein (Ser518) Rabbit Monoclonal Antibody****Catalog #: AMRe84914**

For research use only.

**Summary**

<b>Description</b>	Recombinant rabbit monoclonal antibody
<b>Host</b>	Rabbit
<b>Application</b>	WB,IHC
<b>Reactivity</b>	Human
<b>Conjugation</b>	Unconjugated
<b>Modification</b>	Phosphorylated
<b>Isotype</b>	IgG
<b>Clonality</b>	Monoclonal
<b>Form</b>	Liquid
<b>Concentration</b>	0.5mg/ml. The concentration of this product may be batch-dependent.
<b>Storage</b>	Aliquot and store at -20°C (valid for 12 months). Avoid freeze/thaw cycles.
<b>Shipping</b>	Ice bags
<b>Buffer</b>	Purified antibody in TBS with 0.05% sodium azide,0.05%protective protein and 50% glycerol.
<b>Purification</b>	Affinity Purification

**Application**

<b>Dilution Ratio</b>	WB 1:500-1:1000,IHC 1:50-1:100
<b>Molecular Weight</b>	Calculated MW: 98 kDa; Observed MW: 98,117 kDa

**Antigen Information**

<b>Gene Name</b>	Phospho-PML Protein (Ser518)
<b>Alternative Names</b>	PML; MYL; RNF71; TRIM19; Protein PML; Promyelocytic leukemia protein; RING finger protein 71; Tripartite motif-containing protein 19
<b>Gene ID</b>	5371.0
<b>SwissProt ID</b>	P29590
<b>Immunogen</b>	A synthetic phosphopeptide corresponding to residues surrounding Ser518 of human PML Protein

**Background**

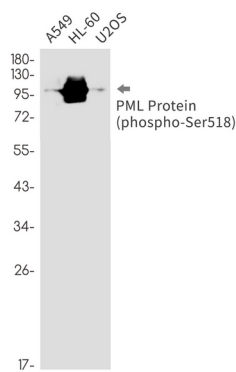
Regulates RB1 phosphorylation and activity. Required for normal development of the brain cortex during embryogenesis. Can

sequester herpes virus and varicella virus proteins inside PML bodies, and thereby inhibit the formation of infectious viral particles. Regulates phosphorylation of ITPR3 and plays a role in the regulation of calcium homeostasis at the endoplasmic reticulum (By similarity). Regulates transcription activity of ELF4.

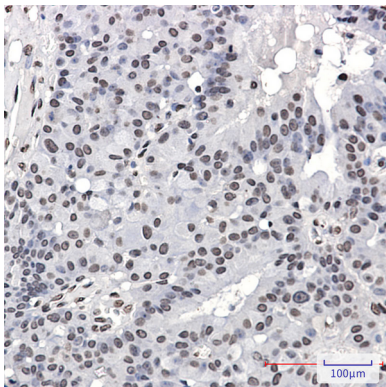
## Research Area

Apoptosis,mTOR signaling pathway

## Image Data



Western blot analysis of Phospho-PML Protein (Ser518) in A549, HL-60, U2OS lysates using Phospho-PML Protein (Ser518) antibody.



Immunohistochemistry analysis of paraffin-embedded Human breast cancer using PML Protein (Phospho-Ser518) antibody. High-pressure and temperature Sodium Citrate pH 6.0 was used for antigen retrieval.