

---

**Product Name: Phospho-MCM2 (Ser27) Rabbit Monoclonal Antibody****Catalog #: AMRe84908**

For research use only.

**Summary**

<b>Description</b>	Recombinant rabbit monoclonal antibody
<b>Host</b>	Rabbit
<b>Application</b>	WB,IHC,ICC,IP
<b>Reactivity</b>	Human
<b>Conjugation</b>	Unconjugated
<b>Modification</b>	Phosphorylated
<b>Isotype</b>	IgG
<b>Clonality</b>	Monoclonal
<b>Form</b>	Liquid
<b>Concentration</b>	0.5mg/ml. The concentration of this product may be batch-dependent.
<b>Storage</b>	Aliquot and store at -20°C (valid for 12 months). Avoid freeze/thaw cycles.
<b>Shipping</b>	Ice bags
<b>Buffer</b>	Purified antibody in TBS with 0.05% sodium azide,0.05%protective protein and 50% glycerol.
<b>Purification</b>	Affinity Purification

**Application**

<b>Dilution Ratio</b>	WB 1:500-1:1000,IHC 1:50-1:100,ICC 1:50-1:200,IP 1:10-1:20
<b>Molecular Weight</b>	Calculated MW: 102 kDa; Observed MW: 125 kDa

**Antigen Information**

<b>Gene Name</b>	Phospho-MCM2 (Ser27)
<b>Alternative Names</b>	MCM2; BM28; CCNL1; CDCL1; KIAA0030; DNA replication licensing factor MCM2; Minichromosome maintenance protein 2 homolog; Nuclear protein BM28
<b>Gene ID</b>	4171.0
<b>SwissProt ID</b>	P49736
<b>Immunogen</b>	A synthetic phosphopeptide corresponding to residues surrounding Ser27 of human MCM2

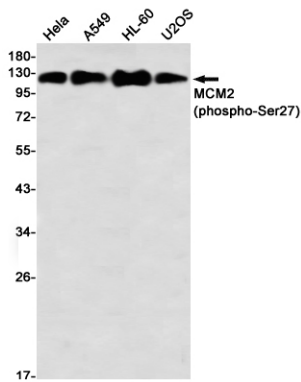
**Background**

The protein encoded by this gene is one of the highly conserved mini-chromosome maintenance proteins (MCM) that are involved in the initiation of eukaryotic genome replication. The hexameric protein complex formed by MCM proteins is a key

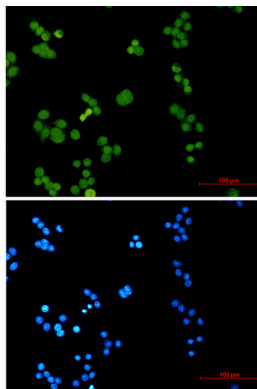
component of the pre-replication complex (pre\_RC) and may be involved in the formation of replication forks and in the recruitment of other DNA replication related proteins. This protein forms a complex with MCM4, 6, and 7, and has been shown to regulate the helicase activity of the complex. This protein is phosphorylated, and thus regulated by, protein kinases CDC2 and CDC7. Multiple alternatively spliced transcript variants have been found, but the full-length nature of some variants has not been defined. [provided by RefSeq, Oct 2012]

## Research Area

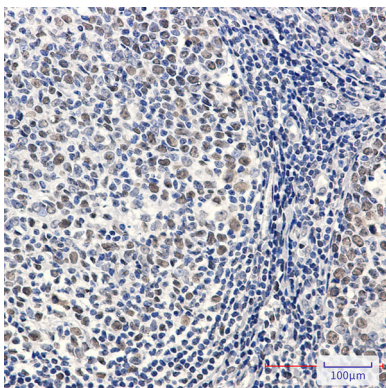
## Image Data



Western blot analysis of MCM2 (Phospho-Ser27) in HeLa, A549, HL-60, U2OS lysates using MCM2 (Phospho-Ser27) antibody.



Immunocytochemistry analysis of Phospho-MCM2 (Ser27) (green) in HeLa using Phospho-MCM2 (Ser27) antibody, and DAPI (blue).



Immunohistochemistry analysis of paraffin-embedded Human tonsil using MCM2 (Phospho-Ser27) antibody. High-pressure and temperature Sodium Citrate pH 6.0 was used for antigen retrieval.