
Product Name: Phospho-EGFR (Tyr1173) Rabbit Monoclonal Antibody**Catalog #: AMRe84897**

For research use only.

Summary

Description	Recombinant rabbit monoclonal antibody
Host	Rabbit
Application	WB,IHC,ICC,IP
Reactivity	Human
Conjugation	Unconjugated
Modification	Phosphorylated
Isotype	IgG
Clonality	Monoclonal
Form	Liquid
Concentration	0.5mg/ml. The concentration of this product may be batch-dependent.
Storage	Aliquot and store at -20°C (valid for 12 months). Avoid freeze/thaw cycles.
Shipping	Ice bags
Buffer	Purified antibody in TBS with 0.05% sodium azide,0.05%protective protein and 50% glycerol.
Purification	Affinity Purification

Application

Dilution Ratio	WB 1:500-1:1000,IHC 1:50-1:100,ICC 1:50-1:200,IP 1:10-1:20
Molecular Weight	Calculated MW: 134 kDa; Observed MW: 175 kDa

Antigen Information

Gene Name	Phospho-EGFR (Tyr1173)
Alternative Names	EGFR; ERBB; ERBB1; HER1; Epidermal growth factor receptor; Proto-oncogene c-ErbB-1; Receptor tyrosine-protein kinase erbB-1
Gene ID	1956.0
SwissProt ID	P00533
Immunogen	A synthetic phosphopeptide corresponding to residues surrounding Tyr1173 of human EGFR

Background

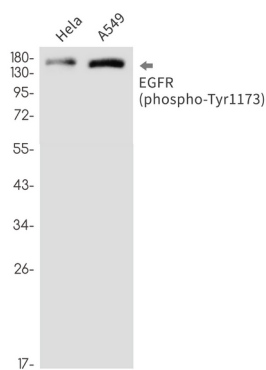
EGFR is a receptor tyrosine kinase. Receptor for epidermal growth factor (EGF) and related growth factors including TGF-alpha, amphiregulin, betacellulin, heparin-binding EGF-like growth factor, GP30 and vaccinia virus growth factor. Is involved in the

control of cell growth and differentiation. . A single-pass transmembrane tyrosine kinase. Ligand binding to this receptor results in receptor dimerization, autophosphorylation (in trans), activation of various downstream signaling molecules and lysosomal degradation.

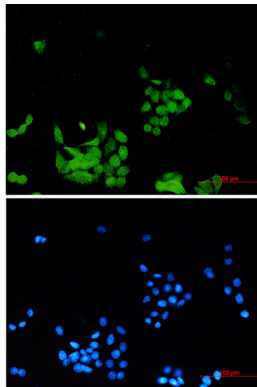
Research Area

TGF-beta signaling pathway,PI3K-Akt signaling pathway,MAPK signaling pathway,Jak-STAT signaling pathway,Hippo signaling pathway

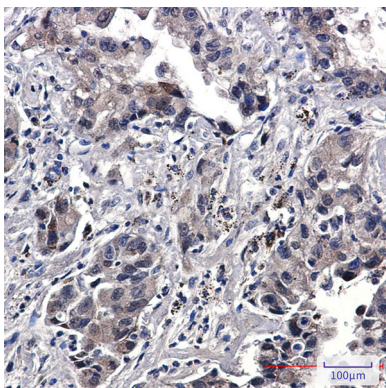
Image Data



Western blot analysis of Phospho-EGFR (Tyr1173) in HeLa, A549 lysates using Phospho-EGFR (Tyr1173) antibody.



Immunocytochemistry analysis of Phospho-EGFR (Tyr1173) (green) in HeLa using Phospho-EGFR (Tyr1173) antibody, and DAPI (blue)



Immunohistochemistry analysis of paraffin-embedded Human lung cancer using EGFR (Phospho-Tyr1173) antibody. High-pressure and temperature Sodium Citrate pH 6.0 was used for antigen retrieval.