

**Product Name: Phospho-delta 1 Catenin (Ser268) Rabbit Monoclonal Antibody**  
**Catalog #: AMRe84895**

---

## Summary

<b>Production Name</b>	Phospho-delta 1 Catenin (Ser268) Rabbit Monoclonal Antibody
<b>Description</b>	Rabbit Monoclonal antibody
<b>Host</b>	Rabbit
<b>Application</b>	WB
<b>Reactivity</b>	Human,Mouse

## Performance

<b>Conjugation</b>	Unconjugated
<b>Modification</b>	Phosphorylated
<b>Isotype</b>	IgG
<b>Clonality</b>	Monoclonal
<b>Form</b>	Liquid
<b>Storage</b>	Store at 4°C short term. Aliquot and store at -20°C long term. Avoid freeze/thaw cycles.
<b>Buffer</b>	Purified antibody in TBS with 0.05% sodium azide,0.05%protective protein and 50% glycerol.
<b>Purification</b>	Affinity Purification

## Immunogen

<b>Gene Name</b>	Phospho-delta 1 Catenin (Ser268)
<b>Alternative Names</b>	CAS; p120; BCDS2; CTNND; P120CAS; P120CTN; p120(CAS); p120(CTN)
<b>Gene ID</b>	1500.0
<b>SwissProt ID</b>	O60716. A synthetic phosphopeptide corresponding to residues surrounding Ser268 of human delta 1 Catenin/CAS

## Application

<b>Dilution Ratio</b>	WB:1:500-1:1000
<b>Molecular Weight</b>	Calculated MW: 108 kDa; Observed MW: 100 kDa

**Product Name: Phospho-delta 1 Catenin (Ser268) Rabbit  
Monoclonal Antibody**  
**Catalog #: AMRe84895**

---

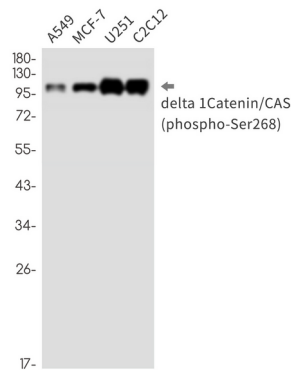
## Background

Catenin  $\delta$ -1 (p120 catenin) has an amino-terminal coiled-coil domain followed by a regulatory domain containing multiple phosphorylation sites and a central Armadillo repeat domain of ten linked 42-amino acid repeats. The carboxy-terminal tail has no known function. Catenin  $\delta$ -1 fulfills critical roles in the regulation of cell-cell adhesion as it regulates E-cadherin turnover at the cell surface to determine the level of E-cadherin available for cell-cell adhesion.

## Research Area

Wnt signaling pathway

## Image Data



Western blot analysis of Phospho-delta 1 Catenin/CAS (Ser268) in A549, MCF-7, U251, C2C12 lysates using Phospho-delta 1 Catenin (Ser268) antibody.

## Note

For research use only.